

XX APPLIED ECONOMICS MEETING

Valencia
June 8-9, 2017



PROMOTED BY:



ORGANIZED BY:



Contents

Welcome	3
Committees Members	4
Meeting Overall Schedule	5
Parallel Sessions Distribution	7
Full List of Papers (by Session)	9
Additional Information	25
<i>About the Venue</i>	25
<i>Transport and Social Events</i>	26

Welcome

The XX Applied Economics Meeting (*Encuentro de Economía Aplicada*) will be held in Valencia on June 8-9, 2017. This edition is jointly organized by the Faculty of Economics and Business of the Catholic University of Valencia “San Vicente Màrtir” (UCV) and the *Asociación Libre de Economía* (ALdE). The Applied Economics Meetings, promoted by the *Asociación Libre de Economía* (ALdE) and the *Revista de Economía Aplicada* (REA), are conceived as a channel to disseminate and discuss research work that deepen the knowledge of reality through the use of applied economic analysis.

This year’s first plenary lecture will be given by Prof. Gianmarco I.P. Ottaviano (London School of Economics and University of Bologna), under the title *International trade and competition: Theory, empirics and Policy*. In the second plenary lecture Prof. . Jeffrey Bergstrand (University of Notre Dame) in his conference *"Quantifying Economic Integration Agreements' Effects and the New International Economic Order"*.

In preparing the parallel sessions, the Scientific Committee had the opportunity to select among more than 200 papers submitted, covering all areas of applied economics. Unfortunately, space limitations meant that a number of fine papers did not make it onto the program. As in previous editions, the 2017 ALdE Prize for Young Researchers will be awarded during the meeting to the best paper whose authors are under 35 years old.

We gratefully acknowledge the support of our sponsors. Special thanks are due to the Faculty of Economics (Catholic University of Valencia “San Vicente Màrtir”), Iberdrola, Banco de España, Institut Valencià de Competitivitat Empresarial (IVACE), Càtedra Pavasal para el Liderazgo de las Organizaciones (Catholic University of València “San Vicente Màrtir”), Colegio de Economistas de València (COEV), the Chair of Energy Sustainability (University of Barcelona), and Renfe, for their kind collaboration. We extend our gratitude to all the people that have helped us behind scenes and to the Catholic University of Valencia “San Vicente Màrtir”, Diputació de València and Centre Cultural La Beneficència for the use of the installations.

On behalf of all the members of the Scientific and Organizing Committees we sincerely hope that you will spend an intellectually challenging and fruitful time. Enjoy the meeting and Valencia!

With our best wishes,

Máximo Camacho, Head of the Scientific Committee

Juan Sapena and Jordi Paniagua, Heads of the Organizing Committee

Committee Members

Scientific Committee

Máximo Camacho Alonso (coordinador)	<i>Universidad de Murcia</i>
Mercedes Teruel Carrizosa	<i>Universitat Rovira i Virgili</i>
Jesús Crespo Cuaresma	<i>Vienna University of Economics and Business</i>
Begoña Dominguez	<i>University of Queensland</i>
Jordi Paniagua	<i>Universidad Catolica de Valencia</i>
Pilar Martinez	<i>Universidad de Murcia</i>
Luis Diaz	<i>Universitat Rovira i Virgili</i>
Maria Dolores Gadea	<i>Universidad de Zaragoza</i>
Beatriz Gonzalez	<i>Universidad de Las Palmas de Gran Canaria</i>
Enrique López Bazo	<i>Universidad de Barcelona</i>
Mariano Matilla García	<i>UNED</i>
Asier Minondo Uribe-Etxeberria	<i>Universidad de Deusto</i>
Andres Picazo	<i>Universidad de Valencia</i>
Manuel Ruiz Marin	<i>Universidad de Cartagena</i>
Hipólito Simón Pérez	<i>Universidad de Alicante</i>
Pilar Poncela	<i>Universidad Autónoma de Madrid</i>
Lourdes López-Valpuesta	<i>Universidad de Sevilla</i>
Cristina Barceló	<i>Banco de España</i>

Organizing Committee

Juan Sapena (coordinador)	<i>Universidad Católica de Valencia</i>
Jordi Paniagua (coordinador)	<i>Universidad Católica de Valencia</i>
Vicent Almenar	<i>Universidad Católica de Valencia</i>
Andreea Apetrei	<i>Universidad Católica de Valencia</i>
Maria Escrivà	<i>Universidad Católica de Valencia</i>
María Gil	<i>Universidad Católica de Valencia</i>
Lourdes López-Valpuesta	<i>Universidad de Sevilla</i>
M ^a Josefa García Grande	<i>Universidad de Alcalá</i>

Meeting Overall Schedule

Meeting venue: **Universidad Católica de Valencia “San Vicente Mártir”**
See the [Additional Information](#) section for directions and details

THURSDAY, 8th JUNE

09.00 H. RECEPTION

09.30 H. PARALLEL SESSIONS 1: 120 min

11.30 H. *Coffee-break* (Centro Cultural la Beneficència)

12.00 H. **OPENING.**

Finalists of the ALdE Young Researcher Award are announced.

12.10 H. **PLENARY TALK. OPENING CONFERENCE**

Prof Gianmarco Ottaviano (London School of Economics)

“Comparative advantage, competition and firm heterogeneity”

14.00 H. *Lunch (cloister in the central courtyard)*

15.30 H. PARALLEL SESSIONS 2: 105 min

17.15 H. *Coffee-break (cloister in the central courtyard)*

17.45 H. PARALLEL SESSIONS 3: 105 min

20.00 H. *VISIT TO CHURCH OF ST. NICOLÁS (C/ de Caballeros, 35)*

‡ COLEGIO DEL PATRIARCA (C/ de la Nau, 1)

(Meeting point: C/. Corona 34 at 19:45)

22.00 H. *Dinner. AT THE TERRACE OF THE COLEGIO DEL ARTE*

MAYOR DE LA SEDA (Carrer de l'Hospital, 7,)

FRIDAY, 9th JUNE

09.00 H. PARALLEL SESSIONS 4: 120 min

11.00 H. Coffee-break (*cloister in the central courtyard*)

11.30 H. PARALLEL SESSIONS 5: 120 min

13.30 H. GENERAL ASSEMBLY OF ALdE (only for members, Centre Cultural la Beneficència)

14.00 H. Lunch (*cloister in the central courtyard*)

15.30 H. PARALLEL SESSIONS 6: 105 min

17.30 H. **PLENARY TALK. CONFERENCE CLOSING**

Prof. Jeffrey Bergstrand (University of Notre Dame)

“Quantifying Economic Integration Agreement’s Effects and the New International Economic Order”

18.00 H. CLOSING

21.30 H. CLOSING DINNER AT THE TERRACE OF THE RESTAURANT CONTRAPUNTO, CLOSE TO THE PALAU DE LES ARTS.

Verdict of the ALdE Young Researcher Award.

Parallel Sessions Distribution

The Parallel Sessions are located in the Faculty of Economics, Catholic University of Valencia (Calle Corona 34) and the Plenary talks in Centro Cultural la Beneficencia (Calle Corona 36) (see the [Additional Information section](#))

THURSDAY, 8th JUNE

09:30 – 11:30 Parallel Sessions 1	12:00 – 14:00 Conference	15:30 – 17:15 Parallel Sessions 2	17:45 – 19:30 Parallel Session 3
Session 1.1 Labor Economics I Room 6101	Plenary talk. Opening conference (VENUE: Salón de Actos, Centre Cultural la Beneficència)	Session 2.1 International Economics I Room 6101	Session 3.1 International Economics II Room 6101
Session 1.2 Education Room 6102		Session 2.2 Development and Growth I Room 6102	Session 3.2 Public Economics and Finance I Room 6102
Session 1.3 Energy and Environmental Economics Room 6103		Session 2.3 Tourism and health Room 6103	Session 3.3 Welfare and Health Economics Room 6103
Session 1.4 Applied Economics I Room 6104		Session 2.4 Applied Econometrics I Room 6104	Session 3.4 Empirical Economics I Room 6104
			Session 3.5 Applied Economics II 6202 (second floor)

FRIDAY, 9th JUNE

09:00 – 11:00 Parallel Sessions 4	11:30 – 13:30 Parallel Sessions 5	15:30 – 17:15 Parallel Sessions 6	17:30 – 19:00 Conference
Session 4.1 Development and growth II Room 6101	Session 5.1 Labor Economics II Room 6101	Session 6.1 Public Economics and Finance II Room 6101	Plenary talk. Closing conference (VENUE: Sal3n de Actos, Centre Cultural de la Benefic3ncia)
Session 4.2 Monetary and Fiscal Policy. Room 6102	Session 5.2 Economic Geography Room 6102	Session 6.2 Education and Labor Room 6102	
Session 4.3 Industrial Organization II Room 6103	Session 5.3 Applied Econometrics II Room 6103	Session 6.3 Empirical Economics II Room 6103	
Session 4.4 Applied Economics III. Room 6104	Session 5.4 Industrial Organization II Room 6104	Session 6.4 Applied Econometrics II Room 6104	
		Session 6.5 Applied Macroeconomics Room 6202 (second floor)	

Full List of Papers (by Session)

Parallel Sessions 1

THURSDAY, JUNE 8th 9.30-11.30 - ROOM 6101	Parallel Session 1.1: Labor Economics I
	Mod.: Last presenter. English
	NAGORE GARCÍA, AMPARO: <i>Gender Differences in Unemployment Dynamics and Initial Wages Over the Business Cycle</i>
	MARTINO, ENRICA MARIA: <i>Working Class Hero: Labor Cost of Motherhood and the Role of Family Policies</i>
	MOSTHAF, ALEXANDER: <i>Change in Self-Efficacy as a Source of State Dependence in Labor Market Dynamics?</i>
	BERTON, FABIO; DEVICIENTI, FRANCESCO; GRUBANOV BOSKOVIC, SARA: <i>Employment Protection Legislation and Mismatch: Evidence from a Reform</i>
	PANIAGUA, JORDI; CUADROS, ANA MARÍA; MARTÍN MONTANER, JOAN: <i>Migration and FDI: The Role of Job Heterogeneity</i>
	SIMÓN, HIPÓLITO; CASADO DÍAZ, JOSÉ MANUEL; LILLO BAÑULS, ADELAIDA: <i>Exploring the Effects of Commuting on Workers' Satisfaction. Evidence for Southern Europe</i>

THURSDAY, JUNE 8th 9.30-11.30 - ROOM 6102	Parallel Session 1.2: Education.
	Mod.: Last presenter. English
	SANAÚ, JAIME; MARTÍN ORO, ÁNGEL; GIMÉNEZ, GREGORIO: <i>The Impact of Districts' Social Development on Student Performance</i>
	DI PAOLO, ANTONIO; CAMINAL, RAMON; CAPPELLARI, LORENZO: <i>Language Skills and the Intergenerational Transmission of Languages in a Bilingual society</i>
	BELLÉS OBRERO, CRISTINA: <i>Who is Learning? A Field Experiment Comparing Three Different Incentive Schemes in the Same Educational Setting</i>
AYHAN, SINEM H.; GATSKOVA, KSENIIA; LEHMANN, HARTMUT: <i>The Impact of Non-Cognitive Skills and Attitudes Towards Risk and Trust on Internal Migration: Evidence from Ukraine</i>	

THURSDAY, JUNE 8th 9.30-11.30 - ROOM 6103	Parallel Session 1.3: Energy and Environmental Economics.
	SPONSORIZED BY CATEDRA DE SOSTENIBILIDAD ENERGETICA.
	Mod.: Last Presenter English
	GIULIETTI, MONICA; TRUJILLO BAUTE, ELISA; WATERSON, MICHAEL: <i>Intermittency and the Social Benefits of Storage</i>
	MORENO, ROSINA; D'AGOSTINO, LORENA M.: <i>The Effects of Green Regions on Local Firms' Innovation</i>
	MORENO MONDÉJAR, LOURDES; CUERVA, MARIA C.: <i>Fostering Investment in Eco-Efficiency Actions. The Case of European SMEs</i>
	RODRÍGUEZ ÁLVAREZ, ANA; OREA, LUIS; JAMASB, TOORAJ: <i>Fuel Poverty and Well-Being: A Consumer Theory and Stochastic Frontier Approach</i>
COSTA CAMPI, MARÍA TERESA; GARCÍA QUEVEDO, JOSÉ: <i>Why do Manufacturing Industries Invest in Energy R&D?</i>	

THURSDAY, JUNE 8th 9.30-11.30 - ROOM 6104	Parallel Session 1.4: Applied Economics I
	Mod.: : Last presenter. Spanish
	LATORRE GUILLEM, MIGUEL ÁNGEL; FARINÓS VIÑAS, JOSÉ EMILIO; HERRERO PIQUERAS, BEGOÑA: <i>La utilización de la Metodología Buy-and-Hold Return (BHR) en la Estimación del Rendimiento Anormal a Largo Plazo de las Empresas que Realizan una Adquisición</i>
	AYVAR CAMPOS, FRANCISCO JAVIER; GIMÉNEZ GARCÍA, VICTOR M. ; NAVARRO CHÁVEZ, JOSÉ CÉSAR LENIN: <i>Incidencia de los Factores Espaciales sobre la Eficiencia en la Generación de Ingreso en México, 1990-2010</i>
	AVELLÓN NARANJO, BLANCA; PRIETO JANO, MARÍA JOSÉ: <i>Los Niveles de Eficiencia Técnica y el Cambio Productivo de las Administraciones Tributarias Autonómicas Españolas</i>
	MEDINAS VIRUEL, MIGUEL JESÚS; LÓPEZ GUZMAN, TOMÁS; PÉREZ GÁLVEZ, JESÚS CLAUDIO; GÓMEZ CASERO, GEMA: <i>Percepción y Valoración Turística de un Destino Patrimonio de la Humanidad: El caso de Santo Domingo de Guzmán (República Dominicana)</i>
	BOTO GARCÍA, DAVID; ÁLVAREZ PINILLA, ANTONIO; BAÑOS PINO, JOSÉ FRANCISCO: <i>Determinantes de la Rentabilidad del Sector Bancario Español: 1995-2014</i>
	ZAPICO FERNÁNDEZ, EMMA; DEL VALLE TUERO, EDUARDO; VALDÉS PELÁEZ, LUIS ; BAÑOS PINO, JOSÉ: <i>Análisis econométrico del gasto turístico de los cruceristas: resultados para un puerto de escala.</i>

Parallel Sessions 2

THURSDAY, JUNE 8th 15.30-17.15 ROOM 6101	Parallel Session 2.1: International Economics I.
	Mod.: Mod: Last presenter. English
	LLORCA VIVERO, RAFAEL; GIL PAREJA, SALVADOR; MARTINEZ SERRANO, JOSÉ ANTONIO: <i>Corruption and International Trade: A Comprehensive Analysis with Gravity</i>
	MATANO, ALESSIA; NATICCHIONI, PAOLO: <i>China's Import Competition and Innovation: the Role of Unions.</i>
	HIRSCH, CORNELIUS; OBERHOFER, HARALD: <i>Bilateral Trade Agreements and Trade Distortions in Agricultural Markets</i>
	SERRANO MARTÍNEZ, JAVIER; MYRO, RAFAEL: <i>Management Quality and Firm Heterogeneity in International Trade</i>

THURSDAY, JUNE 8th 15.30-17.15 - ROOM 6102	Parallel Session 2.2: Development and growth I.
	Mod.: Last presenter. English
	CRESPO CUARESMA, JESÚS; GRÜN, BETTINA; HOFMARCHER, PAUL; HUMER, STEFAN; MOSER, MATHIAS: <i>Unveiling Covariate Inclusion Structures in Economic Growth Regressions Using Latent Class Analysis</i>
	HASBI, MAUDE: <i>Impact of Superfast Broadband on Local Economic Growth: Empirical Evidence Using a Matching Estimator</i>
	RUBIO, MARGARITA; CARRASCO GALLEGO, JOSÉ A.: <i>Financial and Macroeconomics Stability in the Euro Area: a Coordination Issue</i>
	SANZO NAVARRO, MARCOS; VERA CABELLO, MARÍA: <i>Regional Convergence and Spatial Dependence: A Worldwide Perspective</i>

THURSDAY, JUNE 8th 15.30-17.15 - ROOM 6103	Parallel Session 2.3: Tourism and health
	Mod.: . Mod: Last presenter. English
	PANIAGUA, JORDI; SANTANA GALLEGO, MARÍA: <i>Tourism and Migration: A Lonely Planet?</i>
	ALBALADEJO, ISABEL P.; GONZÁLEZ MARTÍNEZ, MARIBEL: <i>A Disaggregated Analysis of the Spanish Tourism Demand Based on the TALC Theory</i>
	MARCEN, MIRIAM; MORALES, MARINA; MOLINA, JOSE ALBERTO: <i>The Effect on the Fertility Decisions of Immigrant Women in the United States</i>
ORTEGA, BIENVENIDO; SANJUÁN, JESÚS; CASQUERO, ANTONIO: <i>Do Illicit Financial Flows Hurt Basic Healthcare Provision? The Case of Infant Vaccination Coverage in Low-and Middle-Income Countries</i>	

THURSDAY, JUNE 8th 15.30-17.15 - ROOM 6104	Parallel Session 2.4: Applied Econometrics I.
	Mod: Last presenter. English
	GONZÁLEZ ASTUDILLO, MANUEL: <i>GDP Trend-Cycle Decompositions Using State-Level Data</i>
	MACCHIARELLI, CORRADO; CAMPOS, NAURO: <i>Core-Periphery Dynamics in Europe, 1987-2015</i>
	CUESTAS OLIVARES, JUAN CARLOS: <i>Asymmetries in the interaction between housing prices and housing credit in Estonia</i>
	CAMACHO, MÁXIMO; CARO, ÁNGELA; LÓPEZ BUENACHE, GERMAN: <i>The Two-Speed Europe in Business Cycle Synchronization</i>

Parallel Sessions 3

THURSDAY, JUNE 8th 15.30-17.15 - ROOM 6101	Parallel Session 3.1: International Economics II
	Mod: Last presenter English
	DÍAZ MORA, CARMEN; GANDOY, ROSARIO; GONZÁLEZ DÍAZ, BELÉN: <i>Looking Into GVCs: The Influence of Foreign Services on Export Performance</i>
	PARDOS MARTÍNEZ, EVA; SABATÉ SORT, MARCELA; GADEA RIVAS, LOLA: <i>The Incidence of Tariff Protection in the Periphery, 1870-1913</i>
	MINONDO, ASIER; DE LUCIO, JUAN; MÍNGUEZ, RAÚL; REQUENA, FRANCISCO: <i>The Granularity of Spanish Exports</i>
MINONDO, ASIER; MÍNGUEZ, RAÚL; REQUENA, FRANCISCO; DE LUCIO, JUAN: <i>The Granular and Fundamental Components of Export Specialization</i>	

THURSDAY, JUNE 8th 15.30-17.15 - ROOM 61102	Parallel Session 3.2: Public Economics and Finance I.
	Mod: Last presenter. English
	ARTÉS, JOAQUÍN; JIMÉNEZ, JUAN LUIS; PERDIGUERO, JORDI: <i>The Effects of Revealed Corruption on Local Finances</i>
	ROMAGUERA DE LA CRUZ, MARINA: <i>Economic Insecurity in Spain: a Multidimensional Analysis</i>
	INGLADA, LUCIA; COTO MILLAN, PEDRO PABLO: <i>Modeling Nonlinearity and Chaos in Financial Markets</i>
JIMÉNEZ, IGNACIO; PICAZO TADEO, ANDRÉS J.; SÁEZ FERNÁNDEZ, FRANCISCO JAVIER: <i>Efficiency and Non-Performing Loans in the LAC Banking Industry: Are Cooperative and Commercial Banks so Different?</i>	

THURSDAY, JUNE 8th 17.45-19.30 - ROOM 6103	Parallel Session 3.3: Welfare and Health Economics.
	Mod.: Last presenter. English
	AYALA, LUIS; BÁRCENA MARTÍN, ELENA; MARTÍNEZ VÁZQUEZ, JORGE: <i>The Unintended Distributional Costs of Devolution in the U.S. Welfare Reform of 1996</i>
	GARCÍA MIRALLES, ESTEBAN: <i>The Crucial Role of Social Welfare Criteria for Optimal Inheritance Taxation</i>
	MARCEN, MIRIAM; MORALES, MARINA: <i>Remain Single or Live Together: Does Culture Matter?</i>
	BRUN MARTOS, MARÍA ISABEL; BALAGUER COLL, MARÍA TERESA; TORTOSA AUSINA, EMILI: <i>The Socio-Economic, Political and Budgetary Determinants of Spanish Local Government Transparency</i>

THURSDAY, JUNE 8th 17.45-19.30 - ROOM 6104	Parallel Session 3.4: Empirical Economics I
	Mod: Last presenter. English
	PERI, ALESSANDRO: <i>Bankruptcy Reforms when Workers Extract Rents</i>
	GOULAS, SOFOKLIS; MEGALOKONOMOU, RIGISSA: <i>Gender Social Interactions Through Space and Time: Evidence from College Enrollment</i>
	ROSELL, JORDI; GONZÁLEZ AREGALL, MARTA: <i>Persistent and Transient Efficiency on Container Port Terminals in Europe</i>
	GHOSH , ISHAN DEEP: <i>Productive Offshoring: Evidence from Spain</i>

THURSDAY, JUNE 8th 17.45-19.30 - ROOM 6202	Parallel Session 3.5: Applied Economics II.
	Mod: Last presenter. Spanish
	ESTEVE PÉREZ, SILVIANO; DE LUCIO, JUAN; MINONDO, ASIER; MÍNGUEZ, RAÚL; REQUENA, FRANCISCO: <i>La Supervivencia Exportadora. Un Análisis a Nivel de Empresa, Producto y Destino</i>
	FERNÁNDEZ PÉREZ, ÁNGEL; SÁNCHEZ DOMÍNGUEZ, ÁNGELES: <i>Los Factores no Clínicos como Determinantes de la Satisfacción con el Sistema Sanitario Público en España</i>
	MOTELLÓN, ELISABET; NIETO, SANDRA: <i>El Efecto del Talento de los Recién Titulados Universitarios en el Acceso a un Empleo de Calidad</i>
	BERMEJO, FERNANDO; FEBRERO, ELADIO: <i>El Retorno Económico del Gasto en Pensiones: Efectos sobre la Economía Española</i>
	GRAU GRAU, ALFREDO JUAN; REIG PÉREZ, ARACELI: <i>El Crédito Comercial y los Determinantes de la Rentabilidad en Europa. El Caso de la Industria Agroalimentaria</i>

Parallel Sessions 4

FRIDAY, JUNE 9th 9.00-11.00 - ROOM 6101	Parallel Session 4.1: Development and growth II.
	Mod.: Mod: Last presenter. English
	CRESPO CUARESMA, JESUS; DANYLO, OLHA; FRITZ, STEFFEN; McCALLUM, IAN; OBERSTEINER, MICHAEL; SEE,LINDA; WALSH, BRIAN: <i>Economic Development and Forest Cover: Evidence from Satellite Data</i>
	STAGE, JESPER; LINDMARK, MAGNUS; NGUYEN, HOANG; NGUYEN, HUONG: <i>What Are the Drivers of the Swedish Sustainable Development Path? New Evidence from Bayesian Dynamic Linear Models</i>
	RAMOS HERRERA, M ^a DEL CARMEN; SOSVILLA RIVERO, SIMÓN <i>Inflation, Real Economic Growth and Unemployment Expectations: An Empirical Analysis Based on the ECB Survey of Professional Forecasters</i>
CASTELLS QUINTANA, DAVID; ROYUELA, VICENTE; THEIL,FABIAN: <i>Inequality Does Cause Human Underdevelopment: Insights from an Analysis of the HDI</i>	

FRIDAY, JUNE 9th 9.00-11.00 - ROOM 6102	Parallel Session 4.2: Monetary and Fiscal Policy
	Mod: Last presenter. English
	OJEDA-JOYA, JAIR N.; GUZMAN, OSCAR E.: <i>The Size of Fiscal Multipliers and the Stance of Monetary Policy in Developing Economies</i>
	RUBIO, MARGARITA; YAO, FANG: <i>Macroprudential Policies in a Low Interest-Rate Environment</i>
	MORALES, JOSÉ RODOLFO: <i>Fiscal Transfers and Economic Geography</i>
	JENSEN, CHRISTIAN: <i>Optimal Forward Guidance in Monetary Policy: Can Central Banks Sway the Public with Projections?</i>
	CHEN, XIAOSHAN; LEITH, CAMPBELL; RICCI, MATTIA: <i>Debt sustainability and welfare along an Optimal Laffer Curve</i>
	BURRIEL, PABLO; GALESÌ, ALESSANDRO: <i>Uncovering the Heterogeneous Effects of ECB Unconventional Monetary Policies across Euro Area Countries</i>

FRIDAY, JUNE 9th 9.00-11.00 - ROOM 6103	Parallel Session 4.3: Industrial Organization II
	Mod.: Last presenter. English
	RICHARD GEDDES, R.; ALBALATE, DANIEL; BEL, GERMÀ: <i>Do Public-Private Partnership Enabling Laws Increase Private Investment Infrastructure?</i>
	SUAREZ, CARLOS ANDRÉS: <i>Privatization and Bidding Behavior in Electricity Markets</i>
	LUCENA PIMENTEL, ABEL; AFCHA, SERGIO; CHAPMAN, GARY: <i>(When) Do R&D Subsidies Stimulate External Collaboration? The Role of Collaboration Experience</i>
	POLICARPO GARCIA, CAROLINA; FURQUIM DE AZEVEDO, PAULO: <i>Being Alone or Part of a Chain: the Effect of Non-horizontal Acquisitions</i>
	SEGARRA BLASCO, AGUSTÍ; TERUEL, MERCEDES; JOVÉ LLOPIS, ELISENDA: <i>High-Growth Firms in European Countries: the Different Role of Innovation</i>

FRIDAY, JUNE 9th 9.00-11.00 - ROOM 6104	Parallel Session 4.4: Applied Economics III.
	Mod: Last presenter. Spanish
	DEL SAZ SALAZAR, SALVADOR; DEL SAZ SALAZAR, DANIEL CARLOS: <i>Valoración Económica de Bienes Culturales Utilizando una Función de Bienestar Subjetivo: un Primer Intento y una Comparación con el Método de Valoración Contingente</i>
	LEGAZPE, NURIA: <i>Familia y Empleo: Una Comparativa entre España y Portugal</i>
	MARTÍN ROMÁN, ÁNGEL L.; CUÉLLAR MARTÍN, JAIME; MORAL DE BLAS, ALFONSO: <i>Descomposición del Desempleo Provincial en sus Componentes Estructural y Coyuntural Mediante un Modelo de Error Compuesto y Análisis de sus Patrones Espaciales</i>
	CALVO EJERIQUE, AINHOA; GAMBAU SUELVES, BORJA; PÉREZCASAS, CARMEN: <i>Financiando Inversión Productiva a Largo Plazo: el Impacto ICO en años de crisis económica</i>
	LÓPEZ BAZO, ENRIQUE; MOTELLÓN, ELISABET: <i>Diferencias en las Características de los Trabajadores y la Geografía del Desempleo en España</i>
DUEÑAS FERNÁNDEZ, DIEGO; MORENO MINGUEZ, ALMUDENA: <i>Incidencia de la Paternidad y la Maternidad en las Trayectorias Laborales de los Padres: Diferentes Respuestas ante la Conciliación</i>	

Parallel Sessions 5

FRIDAY, JUNE 9th 11.30-13.30 - ROOM 6101	Parallel Session 5.1: Labor Economics II
	Mod: Last presenter. English
	ERHARDT, EVA: <i>Who Persistently Creates Jobs? Absolute Versus Relative High-Growth Firms</i>
	VERGNAT, VINCENT; RODRIGUES, BRUNO: <i>The duration of Maternity Leave in France and the Transitions Back to the Labour Market: Results from a Competing Risks Model</i>
	JALÓN AYMERICH, FRANCISCO DE BORJA; SOSVILLA RIVERO, SIMÓN; HERCE, JOSÉ A.: <i>Countercyclical Labor Productivity: the Spanish Anomaly</i>
	WANNER, PHILIPPE; PECORARO, MARCO: <i>Occupational Mismatch, Wage up/downgrading and Immigrants' Emigration Decision</i>
	SCHUSS, ERIC: <i>Substantial Labor Market Effects of Initial Conditions of Immigrants</i>
	GIMÉNEZ NADAL, J. IGNACIO; MOLINA, J. ALBERTO; VELILLA, JORGE: <i>Leisure and Effort at Work: Incorporating Self-Employment into Urban Markets</i>

FRIDAY, JUNE 9th 11.30-13.30 - ROOM 6102	Parallel Session 5.2: Economic Geography
	Mod: Last presenter. English
	OTO PERALÍAS, DANIEL: <i>Settlement Patterns in Europe and the Spanish Anomaly: the Medieval Frontier Origins of a Country's Economic Geography</i>
	PEIRÓ PALOMINO, JESÚS: <i>The Geography of Social Capital and Innovation in the European Union</i>
	AÑÓN HIGÓN, DOLORES; DIEZ MINGUELA, ALFONSO: <i>Location, Location... Do Universities Matter for Foreign R&D?</i>
	CASTRO NUÑO, MERCEDES; CASTILLO MANZANO, JOSÉ I.; FAGEDA, XAVIER: <i>Differential Aspects of Road Safety in Urban Areas: an Econometric Assessment of the Spanish Case</i>
	GONZÁLEZ VAL, RAFAEL: <i>When Zipf Meets Space.</i>

FRIDAY, JUNE 9th 11.30-13.30 - ROOM 6103	Parallel Session 5.3: Applied Econometrics II
	Mod: Last presenter. English
	FAGEDA, XAVIER; BERNARDO, VALERIA: <i>The Effects of the Morocco- European Union Open Skies Agreement: A Difference-in-Differences Analysis</i>
	GÓMEZ PUIG, MARTA; SOSVILLA RIVERO, SIMÓN: <i>Heterogeneity in the Debt-Growth Nexus: Evidence from EMU Countries</i>
	NARBÓN PERPIÑA, ISABEL; ARRIBAS, IVAN; BALAGUER COLL, MARÍA TERESA; TORTOSA AUSINA, EMILI: <i>Explaining Differences in Local Governments' Cost Efficiency: A Instrumental Variable Quantile Regression Approach</i>
	LÓPEZ GÓMEZ, LAURA; BEYAERT, ARIELLE; GARCÍA SOLANES, JOSE: <i>Do Institutions of the Euro Area Converge?</i>
	LAMPLE GRACIA, LUIS JAVIER; FERRUZ, LUIS: <i>The role of Consumer Confidence in the Property Market: One Step Further in the Cointegrated House Price Series Model</i>

FRIDAY, JUNE 9th 11.30-13.30 - ROOM 6104	Parallel Session 5.4: Industrial Organization II:
	Mod: Last presenter. English
	TOJEIRO RIVERO, DAMIÁN; MORENO, ROSINA: <i>Acquisition of External Knowledge, Local Spillovers and Firm's Innovativeness</i>
	PIERI, FABIO; RINCON AZNAR, ANA; VECCHI, MICHELA; VENTURINI, FRANCESCO: <i>Does it Takes Two to Tango? The Impact of ICT and R&D on Efficiency</i>
	SANCHIS LLOPIS, AMPARO; AÑÓN HIGÓN, M. DOLORES; MÁÑEZ, JUAN A.; SANCHIS LLOPIS, JUAN A.: <i>The determinants of the distance to TFP frontier among European firms</i>
	ROSELL, JORDI; ALBALATE, DANIEL: <i>On the Efficiency of Toll Motorway Companies in Spain and the Role of Ownership and Regulation</i>
FERRER PÉREZ, HUGO; BEN-KAABIA, MONIA; GIL, JOSÉ M ^a : <i>Price Transmission in Food Quality Scheme Products: Are Supply Chains more Efficient that in the Conventional Counterparts?</i>	

Parallel Sessions 6

FRIDAY, JUNE 9th 15.30-17.15 - ROOM 6101	Parallel Session 6.1: Public Economics and Finance II
	Mod: Last presenter. English
	ARISTEI, DAVID; ANGORI, GABRIELE; GALLO, MANUELA: <i>Lending Technologies, Banking Relationships, and Firms' Access to Credit in Italy: the Role of Firm Size</i>
	SOSVILLA RIVERO, SIMON; ANDRADA FÉLIX, JULIÁN; FERNÁNDEZ PÉREZ, ADRIÁN: <i>Fear Connectedness Among Asset Classes</i>
	GRAGERA, ALBERT; ALBALATE, DANIEL: <i>The Determinants of Garage Prices and Their Interaction with Curbside Regulation</i>
	FUENTES ALBERO, CRISTINA; ANRÉS, JAVIER; BOSCA, JOSÉ E.; FERRI, JAVIER: <i>Heterogeneous Household Finances and the Effect of Fiscal Policy</i>

FRIDAY, JUNE 9th 15.30-17.15 - ROOM 6102	Parallel Session 6.2: Education and Labor
	Mod: Last presenter. English
	CAPARROS RUIZ, ANTONIO: <i>Working as a Researcher in Spain: Does the PhD Duration Matter?</i>
	HINTZMANN COLOMINAS, CAROLINA; LLADÓS MASLLORENS, JOSEP; RAMOS LOBO, RAÚL: <i>Intangible Assets and Labour Productivity Growth</i>
	SANTIN, DANIEL; SICILIA, GABRIELA: <i>Impact Evaluation and Frontier Methods in Education: a Step Forward</i>
	FERRI, JAVIER; BOSCA, JOSÉ E.; BENEITO, PILAR: <i>Tuition Fees and Student Effort at University</i>

FRIDAY, JUNE 9th 15.30-17.15 - ROOM 6103	Parallel Session 6.3: Empirical Economics II
	Mod: Last presenter. English
	SUÁREZ-VARELA MACIÁ, MARTA; DINAR, ARIEL: <i>A Double-Hurdle Approach for Estimation of Bottled Water Demand under Consumer Environmental Attitudes and Water Conservation Policies</i>
	SUÁREZ-VARELA MACIÁ, MARTA: <i>Estimation of Residential Water Demand. Accounting for Substitution Patterns and Non-Linear Income Effects</i>
	GNIDCHENKO, ANDREY A.: <i>The Two Alternative Strategies of Dissecting Intra-Industry Trade</i>
	FICHET DE CLAIRFONTAINE, AURÉLIEN: <i>Dynamics of the Trade Balance: Finding the J-Curve with a Structural Gravity Equation</i>

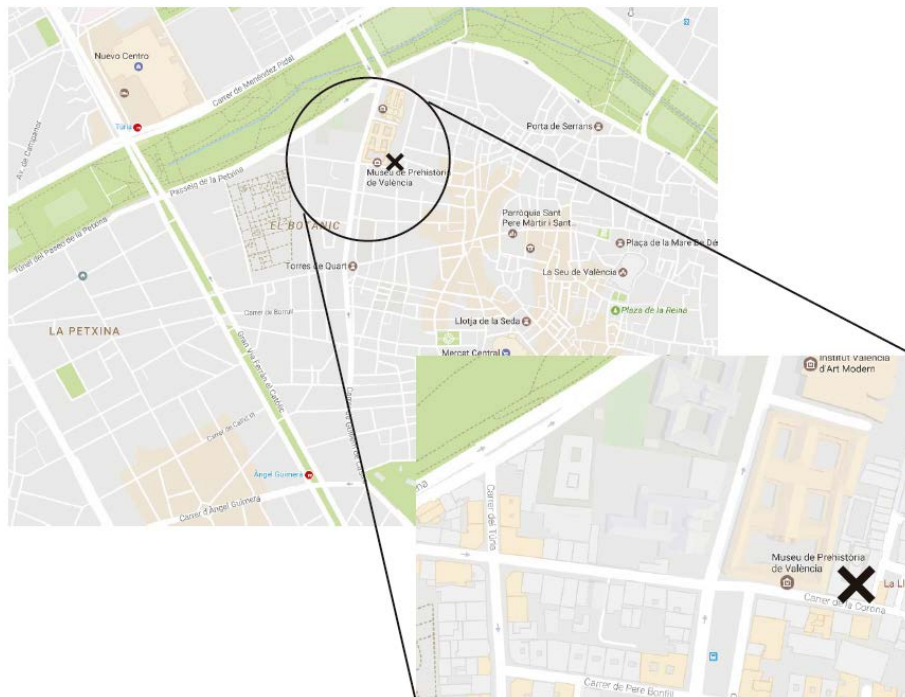
FRIDAY, JUNE 9th 15.30-17.15 - ROOM 6104	Parallel Session 6.4: Applied Econometrics II
	Mod: Last presenter. English
	PÉREZ, JAVIER J.; GIL, MARÍA; SÁNCHEZ FUENTES, ANTONIO JESÚS; URTASUN, ALBERTO: <i>Nowcasting Private Consumption: Traditional Indicators, Uncertainty Measures, and the Role of Internet Search Query Data</i>
	CARRIL CACCIA, FEDERICO; MILGRAM BALEIX, JULIETTE; PANIAGUA, JORDI: <i>Foreign Direct Investment in Middle East and North Africa: the Role of Institutions under the Presence of Black Gold</i>
	CANTÓ, OLGA; DE AGOSTINI, PAOLA: <i>Evaluating the Distributive Impact of VAT Reforms in Spain</i>
	KUKUVEC, ANJA: <i>Human Capital, Technology Diffusion and Total Factor Productivity Growth in Regions</i>

FRIDAY, JUNE 9th 15.30-17.15 - ROOM 6202	Parallel Session 6.5: Applied Macroeconomics
	Mod: Last presenter. English
	DÍEZ MINGUELA, ALFONSO; CAMARERO, MARIAM; MARTÍNEZ GALARRAGA, JULIO; TIRADO FABREGAT, DANIEL: <i>A Tale Worth Telling: Prices and Regional Development</i>
	QUAGHEBEUR, EWOU <i>Adaptive Learning and the Transmission of Government Spending Shocks in the Euro Area</i>
	ISERINGHAUSEN, MARTIN; EVERAERT, GERDIE: <i>Measuring the International Dimension of Output Volatility</i>
	SANSO NAVARRO, MARCOS; VERA CABELLO, MARÍA: <i>The Long-run Relationship Between R&D and Regional Knowledge</i>

Additional Information

About the Venue

- The parallel sessions take place at FACULTAD DE CIENCIAS ECONÓMICAS Y EMPRESARIALES (FEE) building at Calle Corona 34 of Valencia and the plenary talks at *Salón de Actos* of the nearby Centre Cultural de la Beneficència located right next to the FEE building at Calle Corona 36, Valencia. There will be an INFORMATION POINT at the ground floor of the FEE building for registration and any other meeting-related issue.
- All the rooms have a PC connected with a projector and internet connection. Please bring a USB key containing your presentation in PDF or PowerPoint format.
- There is free WiFi coverage at all university buildings
 - SSID: *EEA2017* with password *EEA2017UCV*

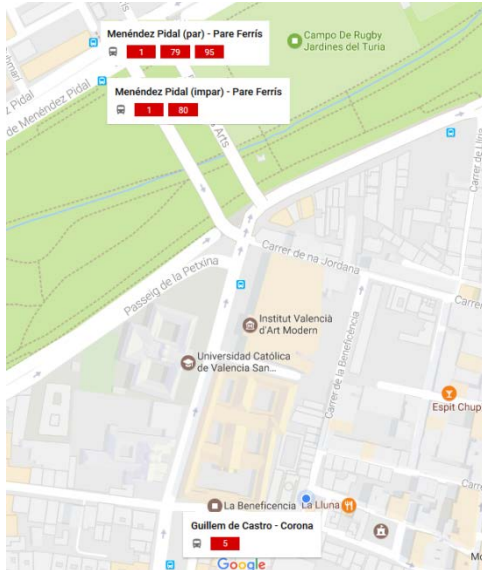


Transport to FACULTAD DE CIENCIAS ECONÓMICAS Y EMPRESARIALES (FEE) of the Catholic University of Valencia “San Vicente Mártir” (UCV).

Public Transport: BUS-EMT

Bus Stop Line 5: Guillem de Castro – Corona

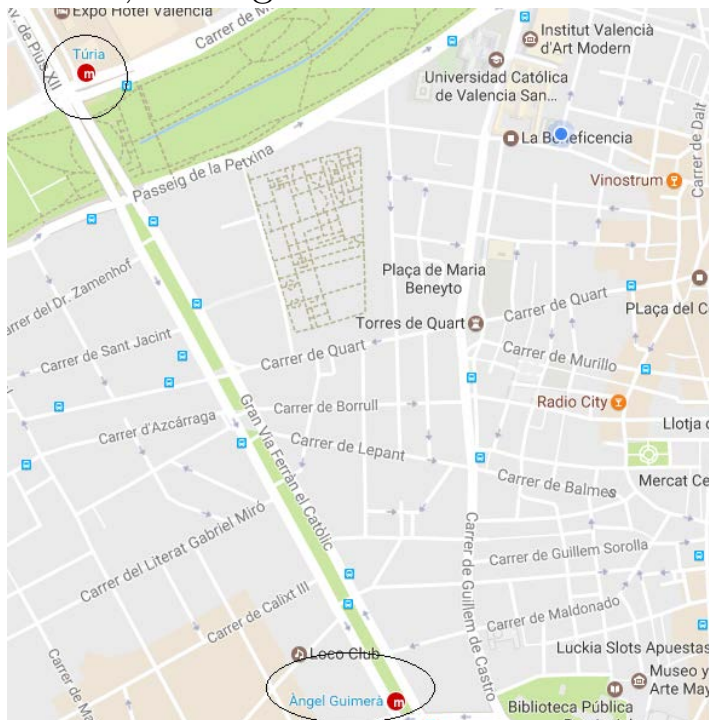
Bus Stop Line 1, 79, 80, 95: Menéndez Pidal



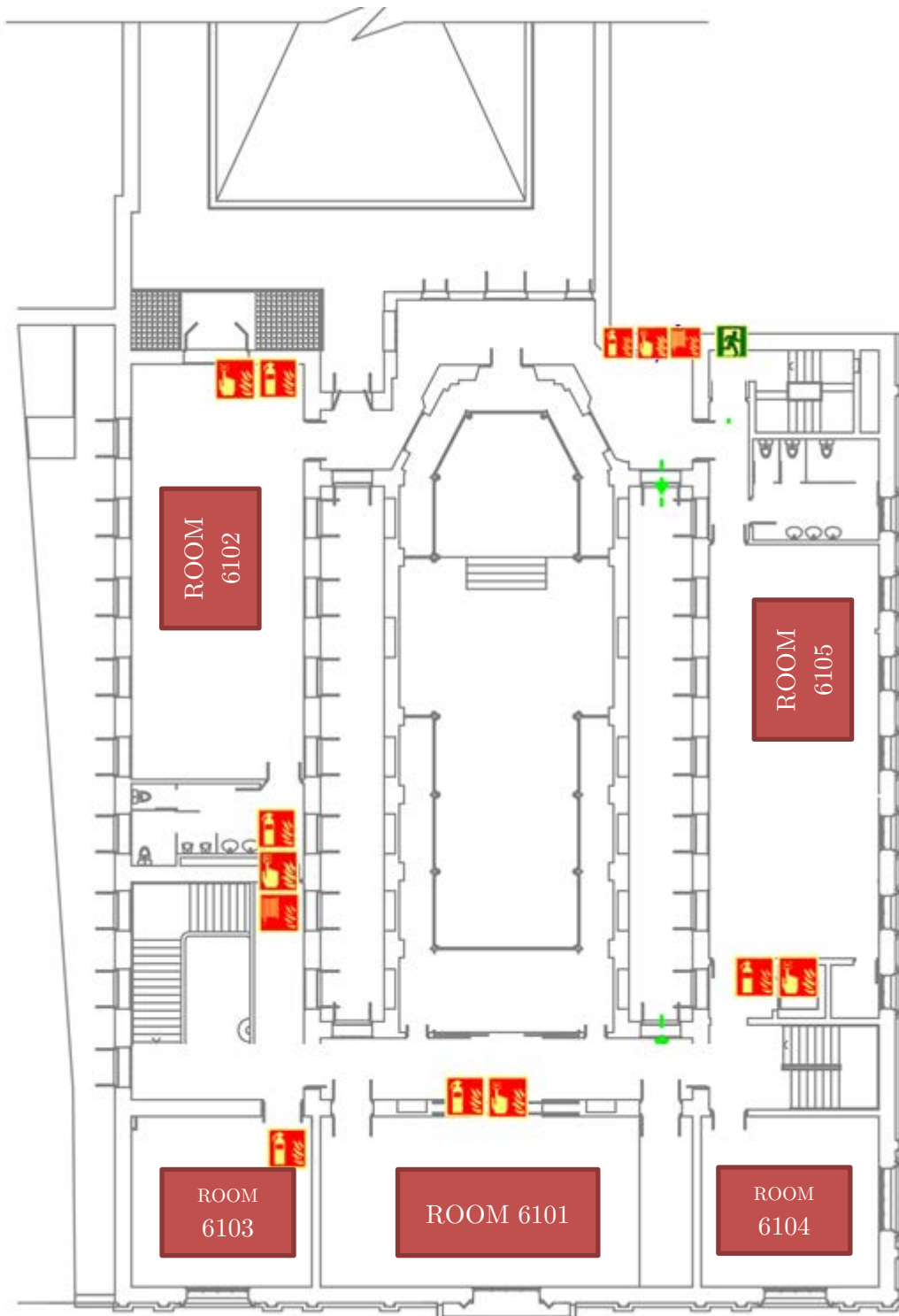
Metrovalencia (subway)

Line 1: Túria Station

Line 3, 5: Àngel Guimerà Station



First floor



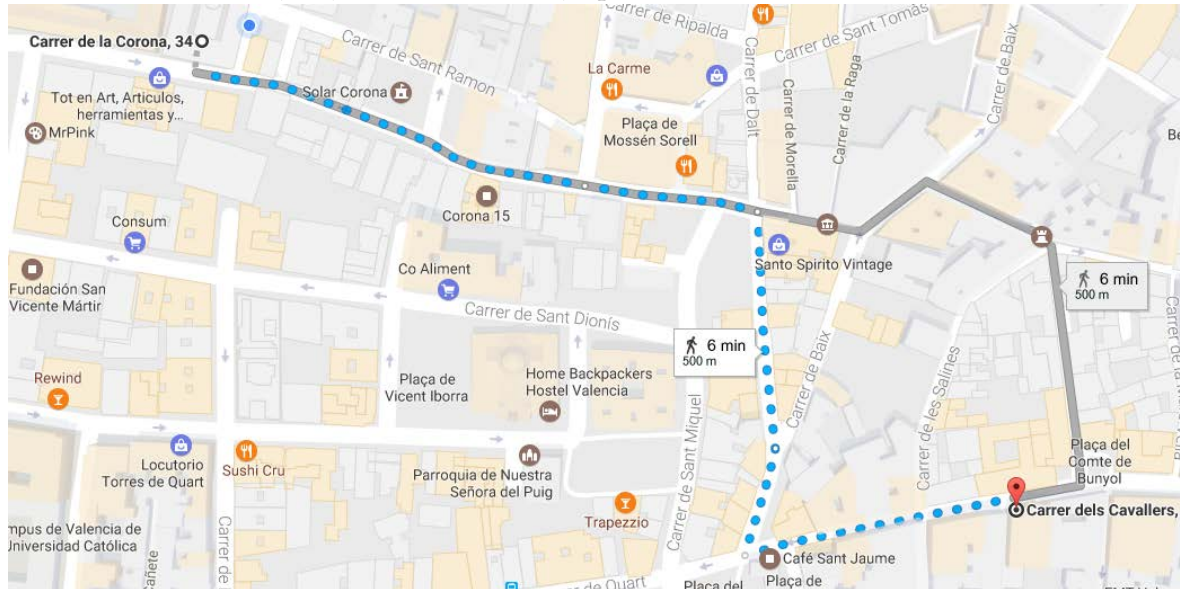
Room 6202 (Sessions 3.5 and 6.5) is located in the second floor right next to the stairs

Social Events

Visit 8th June: CHURCH OF ST. NICOLÁS

[HTTP://WWW.SANNICOLASVALENCIA.COM/](http://www.sannicolasvalencia.com/)

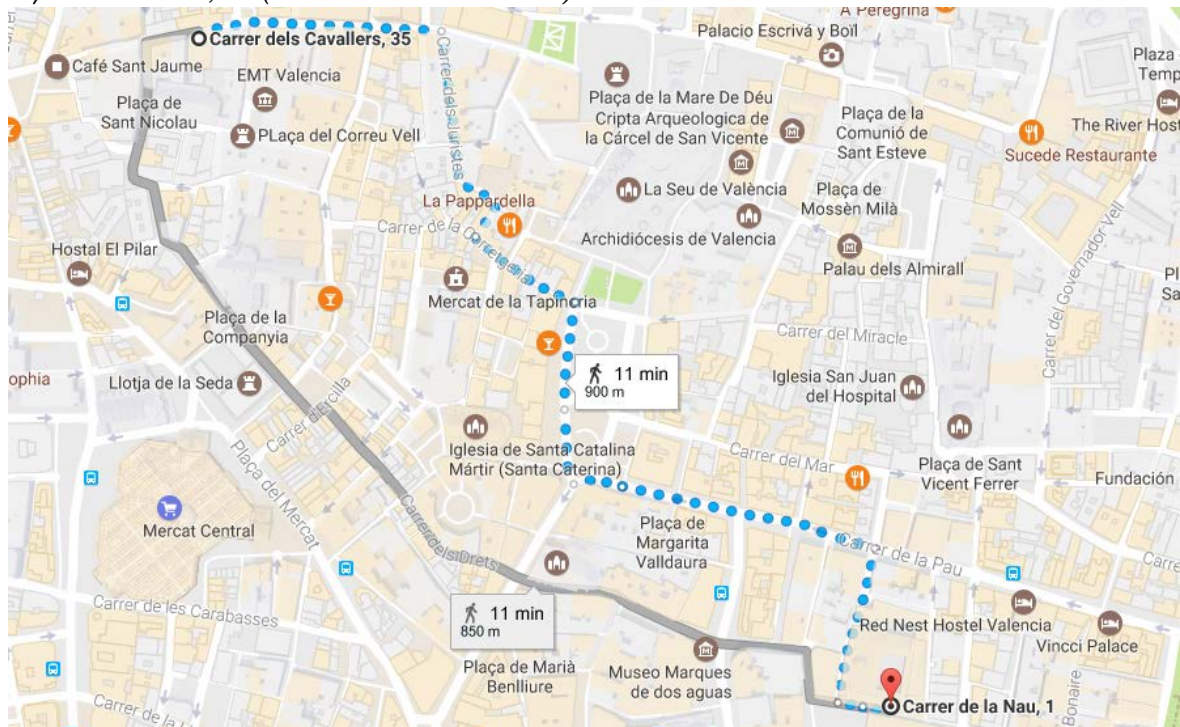
Calle de Caballeros, 35, 46001 Valencia, Spain



Visit 8th June: COLEGIO SEMINARIO EL PATRIARCA

<http://patriarcavalencia.es/>

C/ de la Nau, 1 (Plaza del Patriarca)

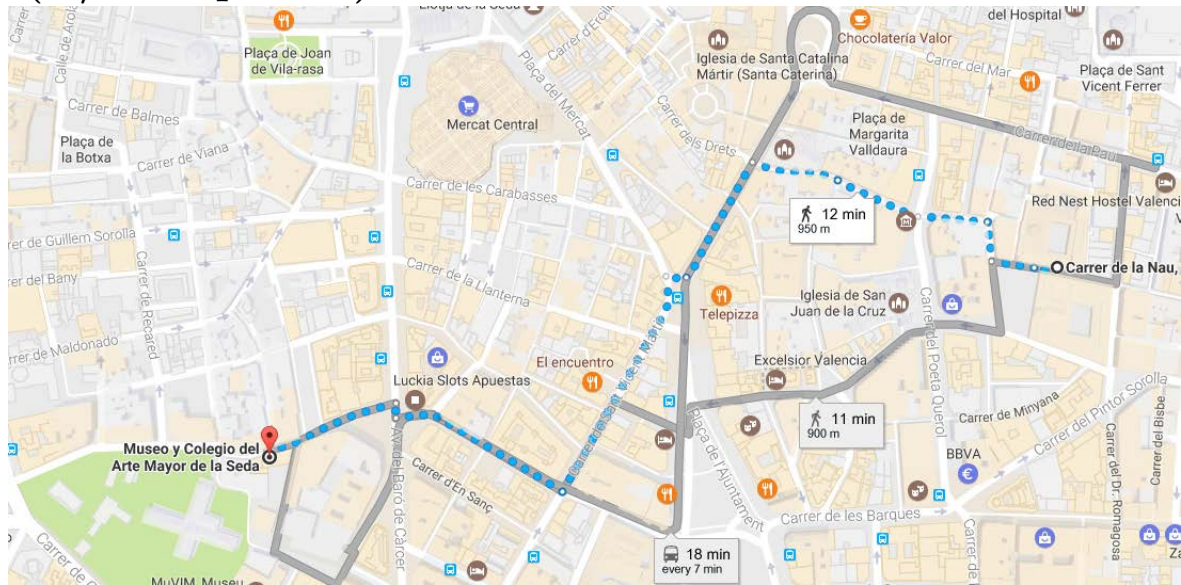


Dinner 8th June (22:00)

Museo y Colegio del Arte Mayor de la Seda

<https://www.museodelasedavalencia.com/>

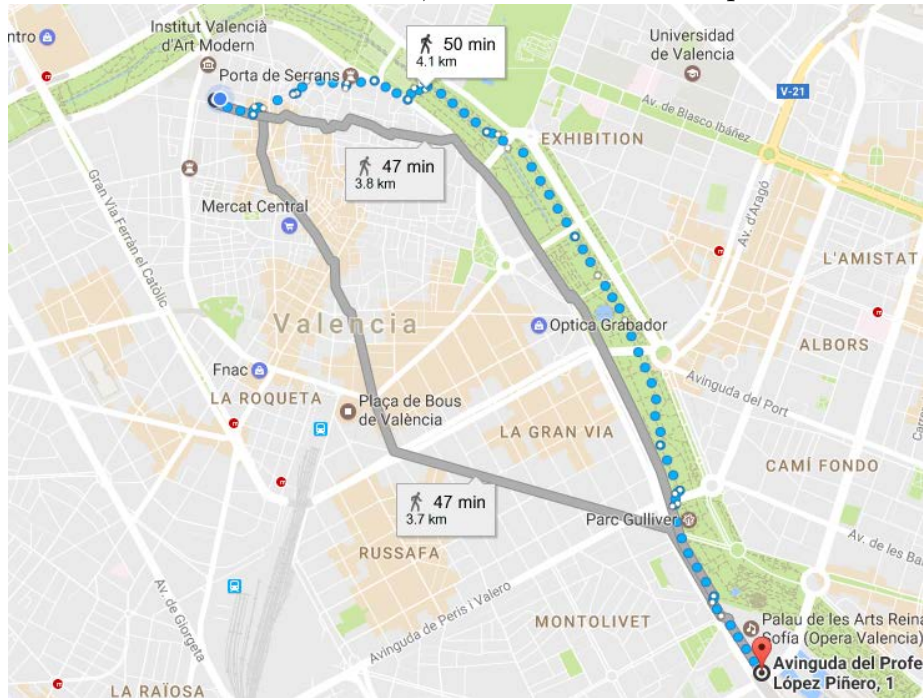
(C/. Hospital 7)



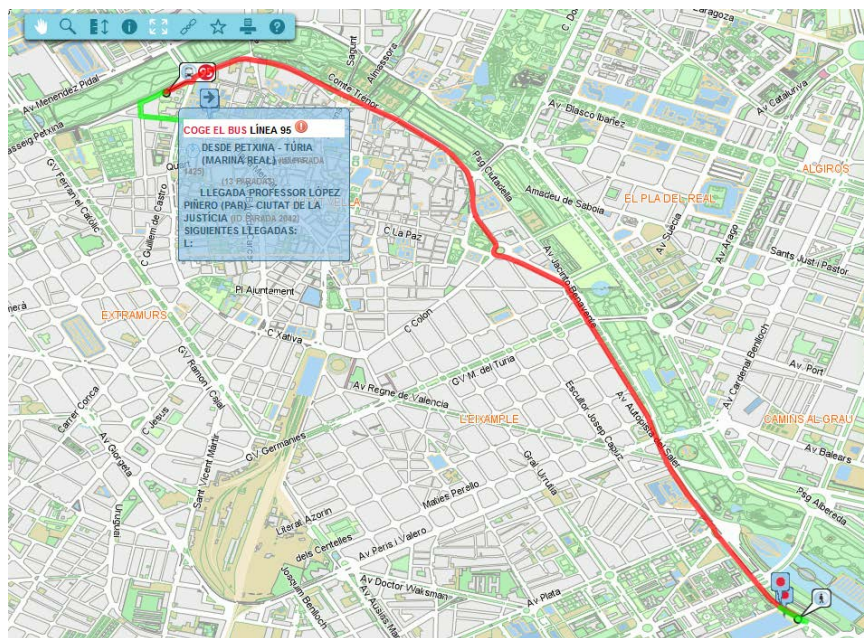
Dinner 9th June Contrapunto

<https://www.restaurantecontrapuntolesarts.com/>

Palau de les Arts Reina Sofia, Av. del Professor López Piñero 1 46013 València.



Bus 95:



Notes

WIFI: EEA2017
Password: EEA2017UCV

The Asociación Libre de Economía (ALdE)
and the Catholic University of Valencia
gratefully acknowledge the sponsorship of:

