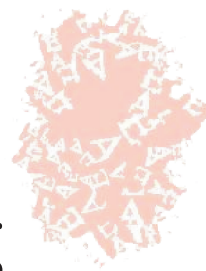


XIX Applied Economics Meeting



Seville, 9-10 June, 2016



PROMOTED BY:



ORGANIZED BY:



Contents

Welcome	03
Committees Members	04
Meeting Overall Schedule	05
Parallel Sessions Distribution	06
Full List of Papers (by Session)	08
Additional Information	20
<i>About the Venue</i>	20
<i>Social Events</i>	21

Welcome

The XIX Applied Economics Meeting (*Encuentro de Economía Aplicada*) will be held in Seville on June 9-10, 2016. This edition is jointly organized by the University of Seville's Applied Economics & Management Research Group and the *Asociación Libre de Economía* (ALdE). Promoted by the *Asociación Libre de Economía* (ALdE) and the *Revista de Economía Aplicada* (REA), the Applied Economics Meetings are conceived as a channel for the dissemination and discussion of research work that deepens knowledge of reality through the use of applied economic analysis.

This year's first plenary lecture will be given by Prof. Santiago Carbó-Valverde (Bangor Business School, Bangor University). It deals with the topic of the impact of IT technologies and new financial providers (fintech) on the financial industry, the economy and the society and is entitled *Financiamiento Digitalización*. In the second plenary lecture, Prof. Stephen Wanhill (University of Limerick and University of Bournemouth) will speak about publications in the journal *Tourism Economics* during his talk on *What Tourism Economists Do. Their Contribution to Understanding Tourism*.

In preparing the parallel sessions, the Scientific Committee had the opportunity to choose from more than 280 submitted papers covering all areas of applied economics. Unfortunately, space limitations meant that a number of fine papers did not make it onto the program. As in previous editions, during the meeting the 2016 ALdE Prize for Young Researchers will be awarded to the best paper whose authors are under 35 of age.

We gratefully acknowledge the support of our sponsors. Special thanks are due to the *Ministerio de Economía y Competitividad*, *Fundación Cajazol*, *Banco de España*, *Ministerio del Interior-Dirección General de Tráfico*, *Departamento de Análisis Económico y Economía Política (University of Seville)*, *Consejería de Turismo y Deporte (Junta de Andalucía)*, and the *Real Alcázar de Sevilla*. We should also like to thank *Cátedra Metropol-Parasol (University of Seville)*, *Vicerrectorado de Investigación (University of Seville)*, *Instituto de Estudios Fiscales*, *the Chair of Energy Sustainability (University of Barcelona)*, *TUSSAM (Seville City Hall)*, *Departamento de Economía Financiera y Dirección de Operaciones (University of Seville)* and *Renfe*, for their kind collaboration. We also extend our gratitude to all the people that have helped us behind the scenes and especially to the *Facultad de Turismo y Finanzas (University of Seville)* for its financial support and the use of its facilities.

On behalf of all the members of the Scientific and the Organizing Committees and ALdE, we sincerely hope that you will have an intellectually stimulating and rewarding time. Enjoy the meeting and Seville!

With our best wishes,

Máximo Camacho, Head of the Scientific Committee

José Ignacio Castillo-Manzano and Lourdes López-Valpuesta, Heads of the Organizing Committee

M^a del Carmen Díaz Mora, Chair of ALdE

Committee Members

Scientific Committee

MÁXIMO CAMACHO (Coordinador)	Universidad de Murcia
EMILIO CONGREGADO	Universidad de Huelva
JESÚS CRESPO CUARESMA	Vienna University.of Econ.&Business
BEGOÑA DOMÍNGUEZ	University of Queensland
OCTAVIO FERNANDEZ AMADOR	Word Trade Institute
JORGE MARTINEZ	Universidad de Murcia
LUIS DÍAZ	Universitat Rovira i Virgili
MARÍA DOLORES GADEA	Universidad de Zaragoza
BEATRIZ GONZÁLEZ	Universidad de Las Palmas G. Canaria
ENRIQUE LÓPEZ BAZO	Universitat de Barcelona
MARIANO MATILLA GARCÍA	UNED
ASIER MINONDO	Universidad de Deusto
ANDRÉS J. PICAZO	Universidad de Valencia
MANUEL RUIZ MARÍN	Universidad de Cartagena
HIPÓLITO SIMÓN PÉREZ	Universidad de Alicante
PILAR PONCELA	Universidad de Autónoma Madrid
JOSE IGNACIO CASTILLO MANZANO	Universidad de Sevilla
ERNESTO VILLANUEVA	Banco de España

Organizing Committee

JOSÉ IGNACIO CASTILLO MANZANO (Coordinador)	Universidad de Sevilla
LOURDES LÓPEZ VALPUESTA (Coordinadora)	Universidad de Sevilla
MERCEDES CASTRO	Universidad de Sevilla
M ^a PILAR DE FUENTES	Universidad de Sevilla
RAFAEL DEL POZO	Universidad de Sevilla
MANUEL MARCHENA	Universidad de Sevilla
MANUEL REY	Universidad de Sevilla
CARMEN MARTINEZ	Universidad de Alicante
CARMEN RÓDENAS	Universidad de Alicante
HIPÓLITO SIMÓN	Universidad de Alicante
JUAN SAPENA	Universidad Católica Valencia

Meeting Overall Schedule

Meeting venue: **FACULTAD DE TURISMO Y FINANZAS- UNIVERSITY OF SEVILLE**
See the [Additional Information](#) section for directions and details

THURSDAY, 9th JUNE

- 09.00 H. RECEPTION
09.30 H. PARALLEL SESSIONS 1: 120 min
11.30 H. *Coffee-break*
12.00 H. OPENING.
Finalists for the ALdE Young Researcher Award are announced.
12.10 H. PLENARY TALK. OPENING CONFERENCE
Santiago Carbó: "Financial digitalisation"
14.00 H. *Lunch. La Basílica Restaurant*
15.30 H. PARALLEL SESSIONS 2: 105 min
17.15 H. *Coffee-break*
17.45 H. PARALLEL SESSIONS 3: 105 min
20.30 H. *Visit the Real Alcázar of Sevilla*
22.00 H. *Dinner. El Cabildo Restaurant.*

FRIDAY, 10th JUNE

- 09.00 H. PARALLEL SESSIONS 4: 120 min
11.00 H. *Coffee-break*
11.30 H. PARALLEL SESSIONS 5: 120 min
13.30 H. GENERAL ASSEMBLY OF ALdE (only for members)
14.00 H. *Lunch. La Basílica Restaurant*
15.30 H. PARALLEL SESSIONS 6: 105 min
17.30 H. PLENARY TALK. CONFERENCE CLOSING
Stephen Wanhill: "What Tourism Economists Do. Their Contribution to Understanding Tourism "
18.30 H. CLOSING
21.30 H. *Closing Dinner. Abades Triana Restaurant.*
Verdict of the ALdE Young Researcher Award is announced.

Parallel Sessions Distribution

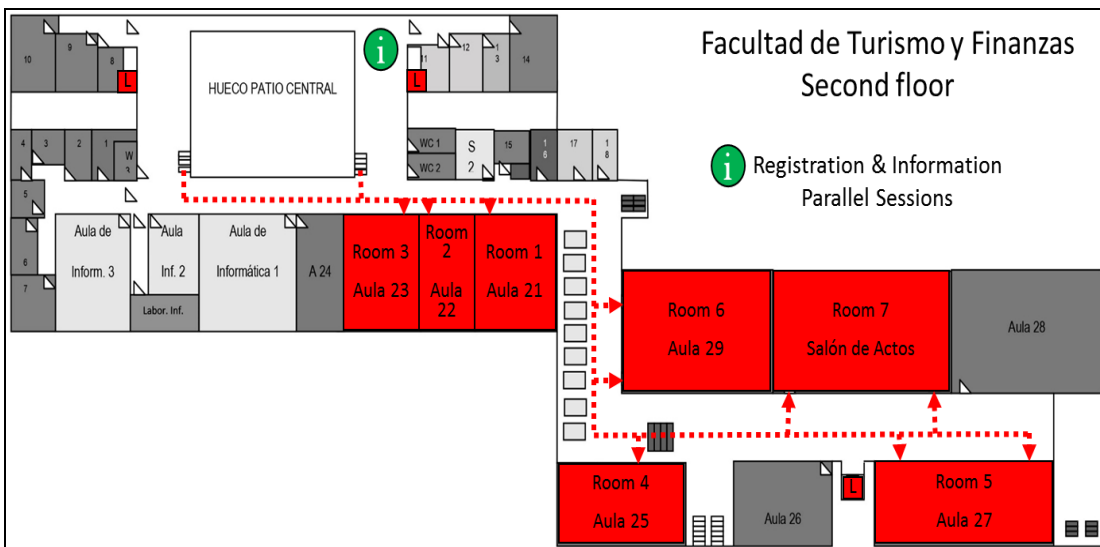
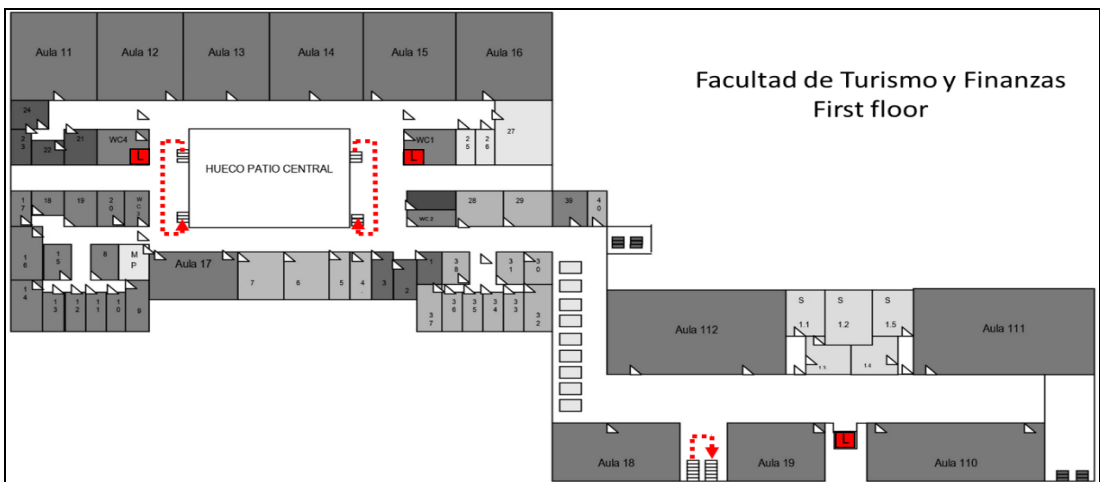
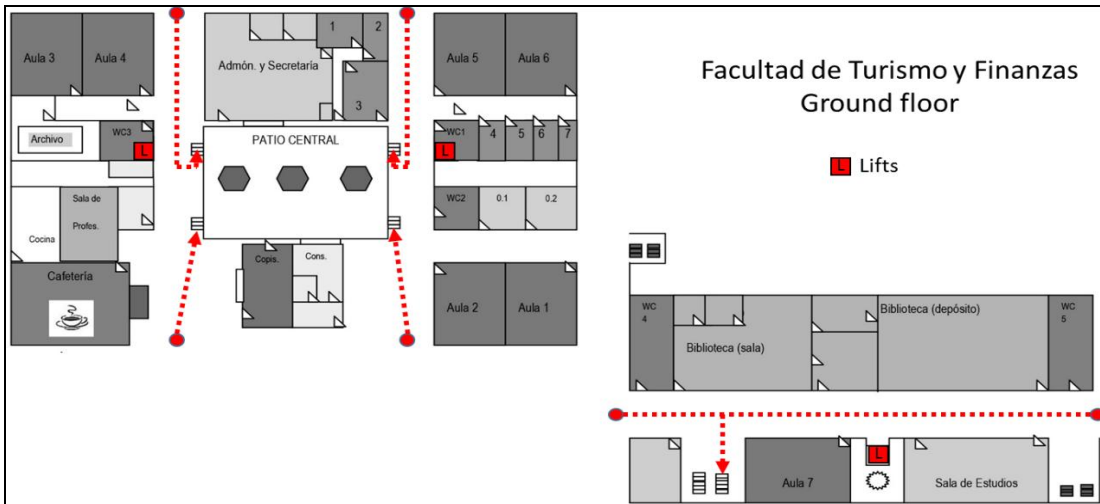
All the rooms are located at FACULTAD DE TURISMO Y FINANZAS (second floor)
(see the [Additional Information section](#))

THURSDAY, 9th JUNE

09:30 – 11:30 Parallel Sessions 1	12:10 – 14:00 Conference	15:30 – 17:15 Parallel Sessions 2	17:45 – 19:30 Parallel Session 3
Session 1.1 Migration Room 1	Plenary talk. Opening conference <small>(Room 7, Salón de Actos, Facultad de Turismo y Finanzas)</small>	Session 2.1 Applied Econometrics II Room 1	Session 3.1 Industrial Organization II Room 1
Session 1.2 Labor Economics I Room 2		Session 2.2 Industrial Organization I Room 2	Session 3.2 Applied Econometrics III Room 2
Session 1.3 Safety Research and Transport Economics Room 3		Session 2.3 Income and Growth Room 3	Session 3.3 Trade and Growth Room 3
Session 1.4 International Economics Room 4		Session 2.4 Finance Room 4	Session 3.4 Welfare and Health Economics Room 4
Session 1.5 Applied Econometrics I Room 5		Session 2.5 Public Economics and Finance Room 5	Session 3.5 Education and Public Economics Room 5
Session 1.6 Applied Economics I Room 6		Session 2.6 Applied Economics II Room 6	Session 3.6 Applied Economics III Room 6

FRIDAY, 10th JUNE

09:00 – 11:00 Parallel Sessions 4	11:30 – 13:30 Parallel Sessions 5	15:30 – 17:15 Parallel Sessions 6	17:30 -18:30 Conference
Session 4.1 Education Economics Room 1	Session 5.1 Monetary and Fiscal Policy II Room 1	Session 6.1 Labor Economics III Room 1	Plenary talk. Closing conference <small>(Room 7, Salón de Actos, Facultad de Turismo y Finanzas)</small>
Session 4.2 Applied Econometrics IV Room 2	Session 5.2 Econometrics Room 2	Session 6.2 Industrial Organization IV Room 2	
Session 4.3 Monetary and Fiscal Policy I Room 3	Session 5.3 Tourism Economics and Management Room 3	Session 6.3 Applied Econometrics V Room 3	
Session 4.4 Labor Economics II Room 4	Session 5.4 Regional Economics Room 4	Session 6.4 Industrial Organization V Room 4	
Session 4.5 Industrial Organization III Room 5	Session 5.5 Energy Economics Room 5	Session 6.5 Applied Economics VI Room 5	
Session 4.6 Applied Economics IV Room 6	Session 5.6 Applied Economics V Room 6		



Full List of Papers (by Session)

Parallel Sessions 1

THURSDAY, JUNE 9th 9.30-11.30 - ROOM 1	Parallel Session 1.1: Migration	English
	Mod.: RAGGL, A.	
	GARY A; MENARD A. AID Trade and Migration: How are OECD countries policies connected in times of crisis?	
	EL-MALLAKH N.; WAHBA J. Upward or Downward: Occupational Mobility and Return Migration	
	FOUARGE D.; OZER M.; SEEGER P. Personality traits and migration intention: Who bears the cost of migration?	
	RAGGL, A. Relative Deprivation as a Cause of Global Migration. An Empirical Assessment	
	CUADROS, A; MARTIN, J.; PANIAGUA, J. Skilled migration and FDI: Countries' characteristics or firms' activity?	

THURSDAY, JUNE 9th 9.30-11.30 - ROOM 2	Parallel Session 1.2: Labor Economics I	English
	Mod.: BONILLA, R.	
	SCHODER, C. An estimated dynamic stochastic labor market disequilibrium model for explaining unemployment in the Euro Area	
	PARTEKA A.; WOLSZCZAK J. Position in global value chain and wages. Evidence from international sector worker data	
	CARMONA M.; CONGREGADO, E.; FERRADAS E. Exploring the dynamics of labor force participation with a nonlinear unobserved component model	
	BONILLA, R. ; TREJOS, A. Marriage, Employment Participation and Bargaining in Search Equilibrium	

THURSDAY, JUNE 9th 9.30-11.30 - ROOM 3	Parallel Session 1.3: Safety Research and Transport Economics	English
	Sponsored by DIRECCION GENERAL DE TRÁFICO	
	Mod.: CASTILLO, J.	
	CASTILLO J.; CASTRO, M.; FAGEDA, X.; LOPEZ, L. Drinking and driving: a panel data approach for the European Union	
	ALBALATE D.; BEL, P. Do public-private partnerships promote road safety?	
	FAGEDA, X. International air travel and FDI flows: evidence from Barcelona	
	CASTILLO, J.; CASTRO, M. ; LOPEZ, L. ; PEDREGAL D. Network carriers versus charters versus low cost carriers: battling it out in the Spanish skies	
	FAGEDA X. ; GONZALEZ, M. What drivers European port traffic? The role of competition	

THURSDAY, JUNE 9th 9.30-11.30 - ROOM 4	Parallel Session 1.4: International Economics	English
	Mod.: LLORCA, R.	
	DE MATIAS, D. The new paradigm of international production. Empirical evidence of Spanish offshoring activities	
	NASIR, H. Sudden stops, productivity and the optimal level of international reserves for small open economies	
	DIAZ, C.; GANDOY, R.; GONZALEZ, B. Engagement and upgrading in gvc's: strengthening the stability of exports	
	GIL, S.; LLORCA, R.; MARTINEZ, J. Does the degree of development matter in the impact of banking crises on international trade?	

THURSDAY, JUNE 9th 9.30-11.30 - ROOM 5	Parallel Session 1.5: Applied Econometrics I	English
	Mod.: FERRER, H	
	HUBER, P.; OBERHOFER, H.; PFAFFERMAYR, M. Who creates jobs? Econometric modeling and evidence for Austrian firm level data	
	LOPEZ, L.; BEYAERT, A.; GARCIA, J. Quality of institutions, corruption and growth	
	MITTERLING, T. Fiscal Policy and Economic Growth: Assessing Nonlinearities and Model Uncertainty	
	HOFMARCHER, P.; CRESPO, J.; GRUN, B.; HUMER, S. ; MOSER, M. Let's have a joint: Measuring jointness in Bayesian Model Averaging	
AYUDA M.; AZNAR A.; FERRER, H. A MSB Unit Root Test Nearly-Robust to the Initial Condition		

THURSDAY, JUNE 9th 9.30-11.30 - ROOM 6	Parallel Session 1.6: Applied Economics I	Spanish
	Mod.: SANDOVAL, B.	
	LOPEZ, J.; PEÑA, G. Evidencia empírica de la neutralidad del IVA financiero respecto al tamaño del sector financiero	
	KHALIFI, L.; BERMEJO, E.; PEREZ, T.; HERNÁNDEZ, A.; ABELLAN, J. ¿Por qué las personas sin hogar no solicitan ayuda económica? El caso de la RMI en España	
	MATO, F.; ESCUDERO, I. Lost in transition? Análisis empírico de los efectos de programas de prácticas para jóvenes titulados	
	JORDI, C.; MANE, F.; MANJON, M. De la universidad al trabajo en tiempos de crisis: Experiencia, antigüedad y conocimientos adquiridos	
	PRATS, M.; SANDOVAL, B. Mercado de valores y crecimiento económico. Un estudio empírico en países del Este de Europa	
	BREY, R.; CASTILLO, J.; CASTRO, M.; LOPEZ L, MARCHENA, M.; SANCHEZ A. Un análisis coste-beneficio de la bicicleta en Sevilla	

Parallel Sessions 2

THURSDAY, JUNE 9th 15.30-17.15 - ROOM 1	Parallel Session 2.1: Applied Econometrics II	English
	Mod.: ROMEU, A.	
	PALMIERI, G., CAMACHO, M. Latin American cycles: Has anything changed after the Great Recession?	
	GROIZARD, J. Local corruption and macroeconomic outcomes: Evidence from the Spanish housing boom	
	GADEA, L.; GOMEZ, A.; LEIVA, D. The evolution of regional economic interlinkages in Europe	
	ALLER, C.; GRANT, C. The effect of the financial crisis on default by Spanish households	
	PEZANIS P.; ROMEU A. Structural inferences from first-price auction data: A comparison of field and lab estimates.	

THURSDAY, JUNE 9th 15.30-17.15 - ROOM 2	Parallel Session 2.2. Industrial Organization I	English
	Mod.: MINONDO, A.	
	LINDQUIST, M.; SOL, J.; MIRJAM, C.; VLADASEL, T. The origins of entrepreneurship: Evidence from sibling correlations.	
	HANOLD, S.; LOPEZ, E. Innovation and inequality. Firm-level evidence from the Spanish regions	
	CORCOLES, D.; DIAZ, C.; GANDOY, R. Complex Internationalization Strategies and Firm Export Dynamics: Crisis and Recovery	
	HERNANDEZ, P. Reassessing the link between firm size and exports	
	LUCIO, J.; MINGUEZ, R; MINONDO, A; REQUENA, F. The variation of export prices across and within Spanish firms	

THURSDAY, JUNE 9th 15.30-17.15 - ROOM 3	Parallel Session 2.3: Income and Growth	English
	Mod.: ONRUBIA, J.	
	LUKACH, R. ; RUEDA J. Income effects in global value chains driven by EU exports	
	HAMMER, C. ; FICHET, A. Trade costs and Income in European regions	
	RAMOS, M.; SOSVILLA, S. Public debt and economic growth: an empirical evaluation	
	MONFORT, M.; ORDOÑEZ, J.; SALA, H. Inequality patterns in Europe.	
	ONRUBIA, J; PICOS, F; RODADO M Evaluating options for shifting tax burden to top income earners.	

THURSDAY, JUNE 9th 15.30-17.15 - ROOM 4	Par. Session 2.4: Finance	English
	Mod.: FLORYSZCZAK, A	
	LOUKIL, N.; YOUSFI, O. ; YERBANGA, R. Gender Diversity on Board and Stock Market Liquidity: Empirical Evidence from the French market	
	PALMA, A. ; SARTORIS, A. Weak-form market efficiency of Brazilian exchange rate: evidence from an artificial neural network model	
	ORMAN, C. ; KOKSAL, B. Structure of Debt Maturity across Firm Types	
	HOPENHAYNY, H. ; SAEEDIZ, M. Dynamic bidding in second-price auctions	
	FLORYSZCZAK, A; LEVY, J; MAJRI, M. A conditional equity risk model for regulatory assessment	

THURSDAY, JUNE 9th 15.30-17.15 - ROOM 5	Parallel Session 2.5: Public Economics and Finance	English
	Mod.: CORDERO, J.	
	ARAY, H.; PEDAUGA, L.; VELAZQUEZ, A. A Financial Social Accounting Matrix for the Spanish Economy	
	BJORNSKOV, C.; RODE, M. And Yet It Grows Crisis, Ideology, and Interventionist Policy Ratchets	
	MARTINEZ, M.; MORALES, J. Resource effects in the core-periphery model	
	CARRION-I-SILVESTRE J. ; VILLAR, O. Dependence and financial contagion in the stock market during the great recession	
	CORDERO, J.; PEDRAJA, F.; POLO, C.; PISAFLORES, E. Efficiency assessment of Portuguese municipalities using a conditional nonparametric approach	

THURSDAY, JUNE 9th 15.30-17.15 - ROOM 6	Parallel Session 2.6: Applied Economics II	Spanish
	Mod.: FERNANDEZ, Y.	
	ONRUBIA J.; DIAZ, C. Desigualdad y rentas altas en España: análisis por fuentes 1984-2012	
	MARTIN, E.; DEL VALLE, I. Integración Vertical y Transmisión de Precios en el Mercado de la Merluza	
	FORNELL, B.; BENITEZ, V.; CORREA, M.; DEL PUERTO, M.; MARTIN, J. Análisis multinivel de la relación entre salud percibida y precariedad laboral durante la crisis (2007-2011)	
	POPULO, M.; SANCHEZ, A.; CABALLERO, P. Factores determinantes para la selección de beneficiarios del Programa Social Tekopora de Paraguay	
	FERNANDEZ, Y; GUTIERREZ, M; RAMAJO J. Corrupción y crecimiento económico: impacto indirecto a través de la regulación empresarial en América Latina y el Caribe	

Parallel Sessions 3

THURSDAY, JUNE 9th 17.45-19.30 - ROOM 1	Parallel Session 3.1: Industrial Organization II	English
	Mod.: ZHANG, Z	
	JIMENEZ, J.; PERDIGUERO, J.; GUTIERREZ, I. More news, good news? Bias in media coverage of competition policy	
	BARCENA, J.; GARZON, M. Privatization of State Holding Corporations	
	DAGOSTINO, L.; MORENO, R. Exploration during turbulent times: an analysis of the effects of R&D cooperation on radical innovation performance during the economic crisis	
	JOVE E. ; SEGARRA A. Innovation success: What is the role of innovation strategies?	
	ZHANG Z. Vertical partnership vs. vertical merger under asymmetric information	

THURSDAY, JUNE 9th 17.45-19.30 - ROOM 2	Parallel Session 3.2: Applied Econometrics III	English
	Mod.: WYSOKINSKA, A	
	JIBRIL, H. Oil Price Level and Volatility Shocks: Are Their Effects On The Trade Balance Linear?	
	LOPEZ L. ; PRIOR, D.; SANTIN, D. Quality improvement programs in public schools. An evaluation of their effectiveness and efficiency	
	VECCO, M.; SRAKAR, A.; PIAZZAI, M. Visitor attitudes to deaccessioning in Italian public museums: an econometric analysis	
	CARRION-I-SILVESTRE J. ; VILLAR O. Contagion in public debt markets: A cointegration approach with nonstationary volatility	
	WYSOKINSKA, A. Invisible wall. Institutions, Culture and Economic Development. Quasi - Natural Experiment	

THURSDAY, JUNE 9th 17.45-19.30 - ROOM 3	Parallel Session 3.3: Trade and Growth	English
	Mod.: GOMEZ E.	
	BANGAKE, C.; EGGOH, J.; SEMEDO, G. Do remittances spur economic growth? Evidence from developing countries	
	WHYTE S. Causes of Export Earnings Instability in the Caribbean	
	RODRIGUEZ I.; REDIN, D.; CUÑADO J.; PEREZ F. Oil prices and economic activity: Evidence based on a wavelet approach	
	GOMEZ E. Cross-border circulation of films and cultural diversity in the EU.	

THURSDAY, JUNE 9th 17.45-19.30 - ROOM 4	Parallel Session 3.4: Welfare and Health Economics	English
	Mod.: MONTAÑES A.	
	MUELLER, T.; SHAIKH, M. Your Retirement and My Health Behaviour: Evidence on Retirement Externalities from a Fuzzy Regression Discontinuity Design	
	SOBREVILLA, A. Intergenerational Transmission of the Body Mass Index (BMI) in Children and Adolescents: A Panel Study for Mexico	
	CLEMENTE, J.; LAZARA, AN; MONTAÑES, A. Public health expenditure in Spain: Is there partisan behaviour?	
	MENEU R.; DEVESA J.; DOMINGUEZ I.; ENCINAS B.; ALONSO J. The Effects of Recent Spanish Pension Reforms on Sustainability and Adequacy of Pensions	

THURSDAY, JUNE 9th 17.45-19.30 - ROOM 5	Parallel Session 3.5.: Education and Public Economics	English
	Mod.: MENEU, R.	
	MARCENARO, O.; LOPEZ, L. Child's Development and academic achievement	
	RUHL, C. Size and welfare costs of price differences across European countries	
	LOPEZ . L. ; MARCENARO O. The relevance of teachers' effectiveness on students' academic achievement	
	KOCHANOVA, A. ; NAGHSH, M. Minds for the Market: Non-Cognitive Skills in Post-Soviet Countries	

THURSDAY, JUNE 9th 17.45-19.30 - ROOM 6	Parallel Session 3.6.: Applied Economics III	Spanish
	Mod.: YÑIGUEZ, R.	
	LOPEZ M. Ya no hay desgravaciones por vivienda. Pero, ¿puede haber política impositiva dirigida a la vivienda?	
	SILVA E.; GIMENEZ J.; MOLINA, J. Desplazamientos forzados y Salarios: Un análisis económico para Colombia.	
	AYVAR F.; GIMENEZ, V; NAVARRO C. La eficiencia en la generación de ingreso en México, 1990-2010: un análisis DEA incorporando factores no controlables	
	CAMPOY P. ; CARDENETE M. ; DELGADO, M ; HEWINGS, G. Effects of a reduction in employers' Social Security contributions: Evidence from Spain.	
	SANZ, T.; VELASCO, F.; YÑIGUEZ, R. ¿Contribuye la Unión Europea a la mejora de la eficiencia global y ambiental? Análisis comparativo del caso de España	

Parallel Sessions 4

FRIDAY, JUNE 10th 9.00-11.00 - ROOM 1	Parallel Session 4.1: Education Economics	English
	Mod.: PECORARO M.	
	ZILIC, I. General versus vocational education: Lessons from a quasi-experiment in Croatia.	
	OBERDABERNIG, D. ; SCHNEEBAUM, A. Catching-up: The educational mobility of migrants' and natives' children in Europe.	
	GERHARDTS, I.; SUNDE, U.; ZIEROW, L. Denominational schools and returns to education. Gender socialization in multigrade classrooms?	
	HERRERA-IDARRAGA, P.; BERNAL, G.; GOMEZ, S. Is test-prepping worth it? Effects of test preparation activities on the performance in the Colombian High School Exit examination	
	PECORARO, M. Estimating the returns to educational mismatch with panel data: the role of unobserved heterogeneity revisited	

FRIDAY, JUNE 10th 9.00-11.00 - ROOM 2	Parallel Session 4.2: Applied Econometrics IV	English
	Mod.: CONGREGADO, E.	
	RECHER, V. Tougher Than the Rest? The Relationship Between Unemployment and Crime in Croatia	
	BOLBOACA, M. ; FISCHER, S. News shocks: Different effects in boom and recession?	
	CARMONA, M. ; CONGREGADO, E.; FERRADAS, E. Asymmetries in the Granger causality relationship between unemployment and labour force participation rate	
	GARCIA, P.; PUJOL, F. Broadcasting revenues and media value in European football	
	SAUCI, L.; CONGREGADO, E.; GOLPE, A. Does there exist a process of convergence in export patterns by self-employed across OECD countries?	

FRIDAY, JUNE 10th 9.00-11.00 - ROOM 3	Parallel Session 4.3: Monetary and Fiscal Policy	English
	Mod.: LOPEZ, V.	
	CRESPO, J.; DOPPELHOFER G.; FELDKIRCHER, M.; HUBER, F. US Monetary Policy in a Globalized World	
	LOPEZ, G. Great Recession and Monetary Policy Transmission	
	KOPPL, M. Opportunistic politicians and fiscal outcomes: The curious case of Vorarlberg	
	AYALA, L.; BARCENA, E. The measurement of welfare inequalities: An application to Spanish regions	
	LOPEZ, V. Does Uncertainty Affect Participation in the European Central Bank's Survey of Professional Forecasters?	

FRIDAY, JUNE 10 th 9.00-11.00 - ROOM 4	Parallel Session 4.4: Labour Economics II	English
	Mod.: BACHTROGLER, J.	
	GALESI A. ; MICHELACCI, C. Job Destruction without Job Creation: Structural Transformation in the Overborrowed America	
	SAYLI, M. Women's Participation Response to Partner's Labour Market Activity: Empirical Evidence on the Added Worker Effect from the BHPS	
	JAHN E. ; NEUGART, M. Do neighbors help finding a job? Social network and labor markets outcomes after plant closures	
	BURON C. ; LASSIBILLE, G. Job satisfaction among primary school personnel in Madagascar	
	BACHTROGLER J. Regional heterogeneity in labour markets, institutional quality and R & D expenditure, and the absorption of European structural funds	

FRIDAY, JUNE 10 th 9.00-11.00 - ROOM 5	Parallel Session 4.5: Industrial Organization III	English
	Mod.: AGUIAR, L.	
	SYRDA, J. Economics of Music Charts: Market Concentration and Product Variety	
	BERGER, W.; NAGASE, Y. Waste Management Regulation: Policy Solutions and Policy Shortcomings	
	DUCH, N. The diffusion of e-commerce among consumers in the EU	
	ARAUZO J.; SEGARRA, A. ; TERUEL, M. Science and technology parks and firms growth.	
	AGUIAR L. Let the Music Play? Free Streaming, Product Discovery, and Digital Music Consumption	

FRIDAY, JUNE 10 th 9.00-11.00 - ROOM 6	Parallel Session 4.6: Applied Economics IV	Spanish
	Mod.: AYUSO, M.	
	BELTRAN, M.; PICAZO, A. Comportamiento medioambiental en la Unión Europea: Eco-innovación versus catching-up	
	BARBERAN, R.; GRACIA, P.; MUR, J La demanda de agua urbana para actividades productivas. Un análisis con microdatos	
	GOMEZ M.; HERRERO, L. Determinantes de la eficiencia en la atracción de turismo nacional y extranjero en España: un análisis regional	
	ALONSO, P.; ORTUÑEZ, P. Determinantes del crecimiento de la producción y de la productividad en el sector de automoción en España, 1980- 2007: un análisis comparado.	
	ALAMINOS, E.; AYUSO, M.; GUILLEN, M. El impacto económico de las necesidades de cuidados de larga duración en el riesgo de iliquidez de la población mayor en España: pensiones y dependencia.	

Parallel Sessions 5

FRIDAY, JUNE 10 th 11.30-13.30 - ROOM 1	Parallel Session 5.1: Monetary and Fiscal Policy II	English
	Mod.: CASTILLO, A.	
	COSTA C. ; GARCIA A.; VAZ A. Post-2008 Brazilian Fiscal Policy: an Interpretation through the analysis of fiscal multipliers	
	BUSOM K.; CORCHUELO B.; MARTINEZ E. Participation inertia in R&D tax incentive and subsidy programs	
	GOUEDARD P. 2003 Reform of the French public pension scheme: Impact of financial incentives on retirement decision	
	BURRIEL P.; GALESÍ A. Unconventional monetary policies in the euro area: a global VAR analysis	
	CASTILLO, A.; LOPEZ, J. Are Spanish companies involved in Profit Shifting activity? Consequences in terms of tax revenues	

FRIDAY, JUNE 10 th 11.30-13.30 - ROOM 2	Parallel Session 5.2: Econometrics	English
	Mod.: AFONSO, J.	
	HUBER F.; FELDKIRCHER, M. Adaptive shrinkage in Bayesian vector autoregressive models	
	PIFFER, M. Assessing identifying restrictions in SVAR models	
	PIRIBAUER P.; CRESPO, J. Bayesian variable selection in spatial autoregressive models	
	PIFFER M.; PODSTAWSKI, M. Identifying uncertainty shocks using the price of gold	
	ONORANTE L. ; RAFTERY A. Dynamic model averaging in large model spaces Using dynamic Occam's window	
	AFONSO J. Power properties of a nonparametric test of the martingale hypothesis	

FRIDAY, JUNE 10 th 11.30-13.30 - ROOM 3	Parallel Session 5.3: Tourism Economics and Management	English
	Sponsored by CÁTEDRA METROPOL PARASOL	
	Mod.: SANTANA, M.	
	TUGORES M.; VALLE, E. Environmental innovation, overnights, and regional growth.	
	SRAKAR, A.; SLABE R. ; VECCO M. Economic effects of Venice Carnivals: An ex-post econometric verification approach	
	GROIZARD, J ; SANTANA, M. The economic consequences of political upheavals: the case of Arab Spring and international tourism.	
	CONGREGADO, E; JUSTO, R. Empirical findings on the determinants of employability in the tourist industry	
	SANTANA, M.; ROSELLO, J.; FOURIE, J. Fatal attraction: How terrorism, crime and corruption hurt tourism.	

FRIDAY, JUNE 10 th 11.30-13.30 - ROOM 4	Parallel Session 5.4: Regional Economics	English
	Mod.: SANZO, M.	
	BARCENA, J.; CASADO, F. Zoning a metropolitan area	
	BORRELLA, M. Partisan Alignment and Political Corruption. Theory and Evidence from Spain	
	SANZO M.; SANZ F.; VERA M. The demographic impact of terrorism: Evidence from Basque municipalities	
	MURILLO, I.; RAMOS, R.; SIMON, H. Regional differences in the gender wage gap in Spain	
	SANZO, M; VERA M. The long-run relationship between R&D and innovation in European regions	

FRIDAY, JUNE 10 th 11.30-13.30 - ROOM 5	Parallel Session 5.5: Energy Economics	English
	Sponsored by CÁTEDRA DE SOSTENIBILIDAD ENERGETICA	
	Mod.: SÁNCHEZ, R .	
	FERNANDEZ, O. ; FRANCOIS, J. ; OBERDABERNIG, D. ; TOMBERGER, P. Carbon Dioxide Emissions and Economic Growth: An Assessment based on Production and Consumption Emission Inventories.	
	TRUJILLO E. The welfare effects of electricity market liberalization.	
	FERIA, J.; GOLPE, A.; IGLESIAS, J. Energy consumption in the US reconsidered. Evidence across sources and economic sectors	
COSTA, M.; DUCH, N. ; GARCIA J. Innovation strategies of energy firms.		

FRIDAY, JUNE 10 th 11.30-13.30 - ROOM 5	Parallel Session 5.6: Applied Economics V	English
	Mod.: PRIETO, M .	
	ALAVAREZ, P.; NUÑEZ, F.; USABIAGA, C. ¿Quién se empareja con quién en el mercado laboral español? Un análisis cluster basado en la muestra continua de Vidas Laborales.	
	SAGASTA, A.; USATEGUI, J. Estructura temporal de emisiones y comparación entre los impuestos óptimos sobre emisiones con alquiler y con venta en un oligopolio de bienes duraderos	
	BERNARDO, V.; PERDIGUERO, J. Efecto de la entrada de nuevos competidores en el mercado español de carburantes.	
	URQUIJO, J.; RODRIGUEZ, C. El impacto del gobierno corporativo en el rendimiento de las entidades financieras españolas	
	GARCIA, C.; PRIETO, M.; SIMON, H. Una aproximación a la medición de la precariedad laboral. Aplicación al caso español (2006-2010)	

Parallel Sessions 6

FRIDAY, JUNE 10th 15.30-17.15 - ROOM 1	Parallel Session 6.1: Labor Economics III	English
	Mod.: CAPARRÓS, A.	
	PAOLO A.; MATANO, A. The Impact of Working while Studying on the Academic and Labour Market Performance of Graduates: the Joint Role of Work Intensity and JobField Match	
	SEBASTIAN R. Job Polarisation and the Spanish Local Labour Market	
	CHRISTL M. ; KOPPL M, KUCSERA D. Employment effects of minimum wages in Europe revisited	
	GARCIA, A. Woman's relative wage and intimate partner violence: The case of Mexico	
	CAPARROS, A. The evolution of the occupational status in Spain: An intergenerational approach	

FRIDAY, JUNE 10th 15.30-17.15 - ROOM 2	Parallel Session 6.2: Industrial Organization IV	English
	Mod.: MARTÍNEZ SÁNCHEZ, F.	
	SUAREZ C. Mixed oligopoly and market power mitigation	
	GRAGERA, A. ; ALBALATE, D. The impact of curbside parking regulation on garage demand	
	BOURREAU, M.; GRZYBOWSKI, L.; HASBI M. Private Operators' Entry Strategies in the FttH Market – The Case of France	
	BLANAS, S.; SERIC, A. Knowledge Transfer and Intra-Firm Trade	
	MARTINEZ, F. Collusion, Customization and Transparency	

FRIDAY, JUNE 10th 15.30-17.15 - ROOM 3	Parallel Session 6.3: Applied Econometrics V	English
	Mod.: SABAT, J.	
	MARSHINSKI, R.; BARREIRO, J.; LUKAH, R. After the 'golden age', the 'refining malaise': understanding the downturn of the European oil refining sector during 2008-2012	
	HUMER, S. Inheritances in the long run	
	FERIA, J.; GOLPE, A.; IGLESIAS, J. The Environmental Kuznets Curve and CO2 emissions in the United States. Is the relationship between GDP and CO2 emissions time varying? Evidence across economic sectors	
	SABAT, J.; KATHURIA, V. Is Exchange rate volatility symmetric to Oil price volatility? An investigation for India	

FRIDAY, JUNE 5th 15.30-17.15 - ROOM 4	Parallel Session 6.4: Industrial Organization V	English
	Mod.: MENDOLICCHIO, C.	
	BERNARDO, V. The effect of entry restrictions on price. Evidence from the retail gasoline market	
	BATSAIKHAN, M. Growth for Micro Enterprises in Developing Countries: Evidence from Phone Card Wholesalers in Mongolia	
	GARCIA, P.; ZARCO, H. Offensive contents in movies: an awkward choice to maximize box office revenues	
	JACOBO A.; JALILE LL. The determinants of Tariff and Non-Tariff Restrictions in Argentina, Brazil and Mexico: Evidence from the Great Recession	
	MENDOLICCHIO C.; PIETRA T. On the efficiency properties of the Roy's model under asymmetric information	

FRIDAY, JUNE 10th 15.30-17.15 - ROOM 5	Parallel Session 6.5: Applied Economics VI	Spanish
	Mod.: ORTEGA, I.	
	AYUDA, M.; GAMBAU, B.; LOPEZ, J. Ventaja fiscal, mercados financieros y renta media de los Top Income: un análisis de largo plazo sobre el patrimonio de las SICAV	
	PEREZ, A.; SANCHEZ, A. La incidencia distributiva del gasto público social en la Unión Europea, 2007-2013	
	RUIZ, M; CORREA, M. Estudio de costes sociales directos e indirectos asumidos por cuidadores de personas con demencias en Andalucía	
	GARCIA, A.; ROMA, R. Cooperación para innovación en manufacturas TIC: características empresariales y efecto sectorial	
	ORTEGA, I.; PEREZ, C.; HERRERO, L; MARTIN J. Evaluación de la eficiencia técnica de los hospitales del Sistema Nacional de Salud español	

Additional Information

About the Venue:

The **XIX Applied Economics Meeting** will be held in the University of Seville's FACULTY OF TOURISM AND FINANCES (FACULTAD DE TURISMO Y FINANZAS (**FTF**)), which is located on the Ramón y Cajal Campus, behind the Economics and Business Management Faculty. Entrances and access routes to the FTF are indicated on Streetmap #1.

Streetmap #1



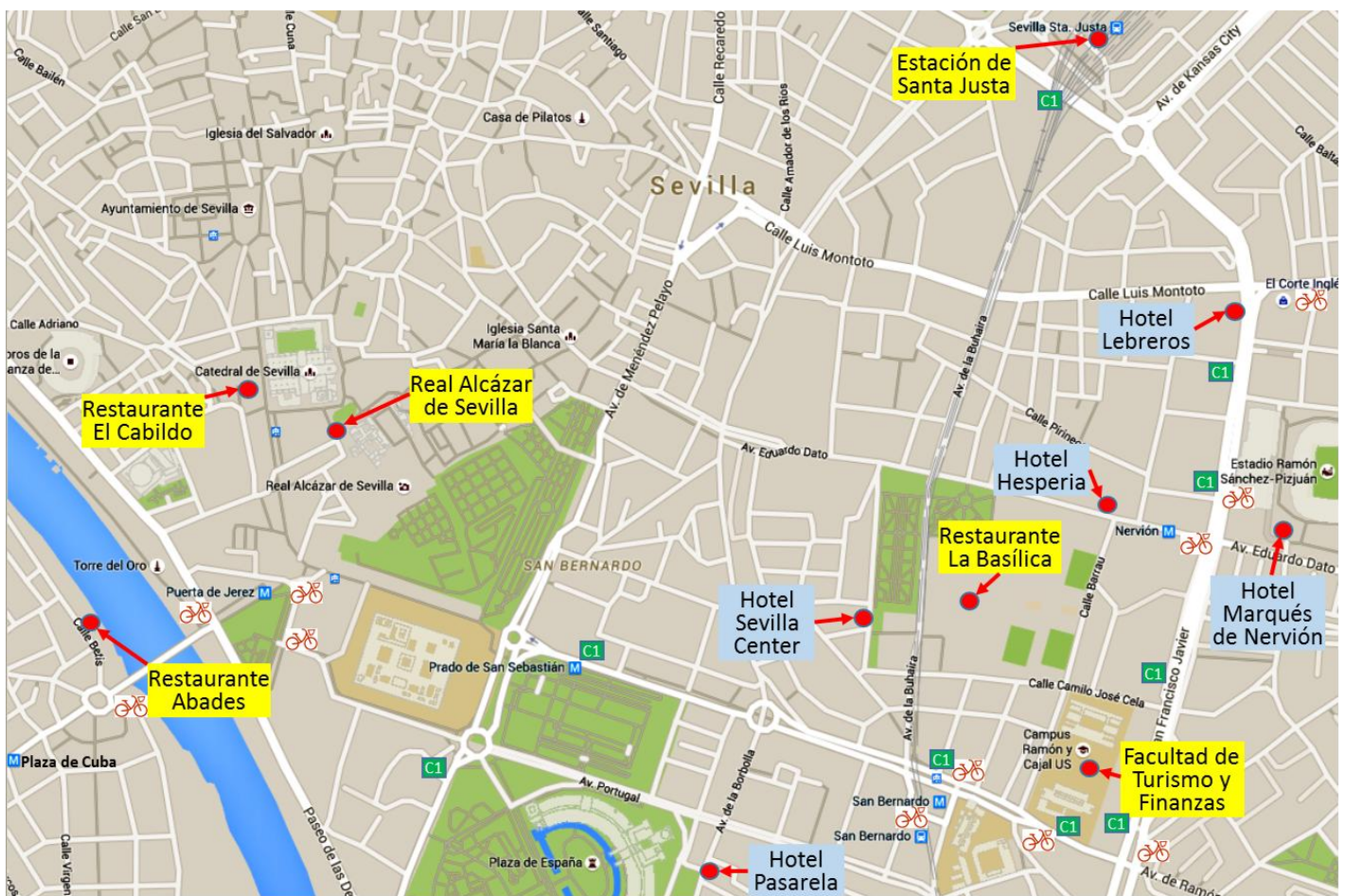
- **Transport:** There are several public bicycle stations 🚲 near the FTF. These require long- or short-term passes (<https://aboseville.cyclocity.fr/Abonate/Abono-de-Corta-Duracion>). There are also subway 🚇, tram 🚊 and bus 🚌 stops. The #C2 bus stops opposite the #C1 stop and goes in the opposite direction. It is possible to get to the FTF on foot from most of the hotels (approx. 10 mins. maximum) (see Streetmap #2) or by bus #C1.
- There will be an **Information & Registration Point** on the second floor of the FTF building for registration and any other meeting-related issues.
- **Parallel sessions** will take place on the second floor of the FTF building with distribution/designated language as indicated in this program. All rooms have a PC connected to a projector. Please bring a USB memory stick with your presentation in PDF or PowerPoint format.
- **Coffee** will be served on the second floor of the FTF building at the indicated times.
- **Lunch** on 9 / 10 June will be at the **La Basílica Restaurant**, in Avenida de la Buhaira. The way to La Basílica Restaurant on foot is indicated in blue on Streetmap #1. Entrance is on the opposite side of the road to the campus.
- **Tickets are given out with accreditation** to attendees at the XIX Applied Economics Meeting and will serve as **individual passes** for scheduled lunch and dinner. You will be asked for them upon entry to restaurants.

Social Events

- Streetmap #2 shows the FTF in the bottom right hand corner and also other places of interest, such as the **Real Alcázar** (visit Thursday 9 June at 8.30pm), the **La Basílica Restaurant** (lunch 9 / 10 June), the **El Cabildo Restaurant** (dinner 9 June at 10pm) and the **Abades Restaurant** (closing dinner 10 June at 9.30pm).

- The visit to the **Real Alcázar de Sevilla** will take place at 8.30pm on 9 June and will last approximately 45 minutes. In accordance with Real Alcázar stipulations, the entrance gate will open 15 minutes before the visit begins and close 15 minutes after it finishes. Please note **entry will be via the Puerta del Apeadero (Patio de Banderas) gate and not through the main gate, the Puerta del León** (<http://www.alcazarsevilla.org/planos/>).
- The best way to get to the **Real Alcázar** and the **El Cabildo Restaurant** (entrance in Avenida de la Constitución) from the FTF is by tram, getting off at the Archivo de Indias stop. For the **Abades Restaurant** in calle Betis it is possible to take the subway from the FTF to the Plaza de Cuba, or the tram to the stop in the Puerta Jerez.

Streetmap #2



Notes

The Organizing Committee and the Asociación Libre de Economía (ALdE) gratefully acknowledge the sponsorship of:



and the kind collaboration of:

